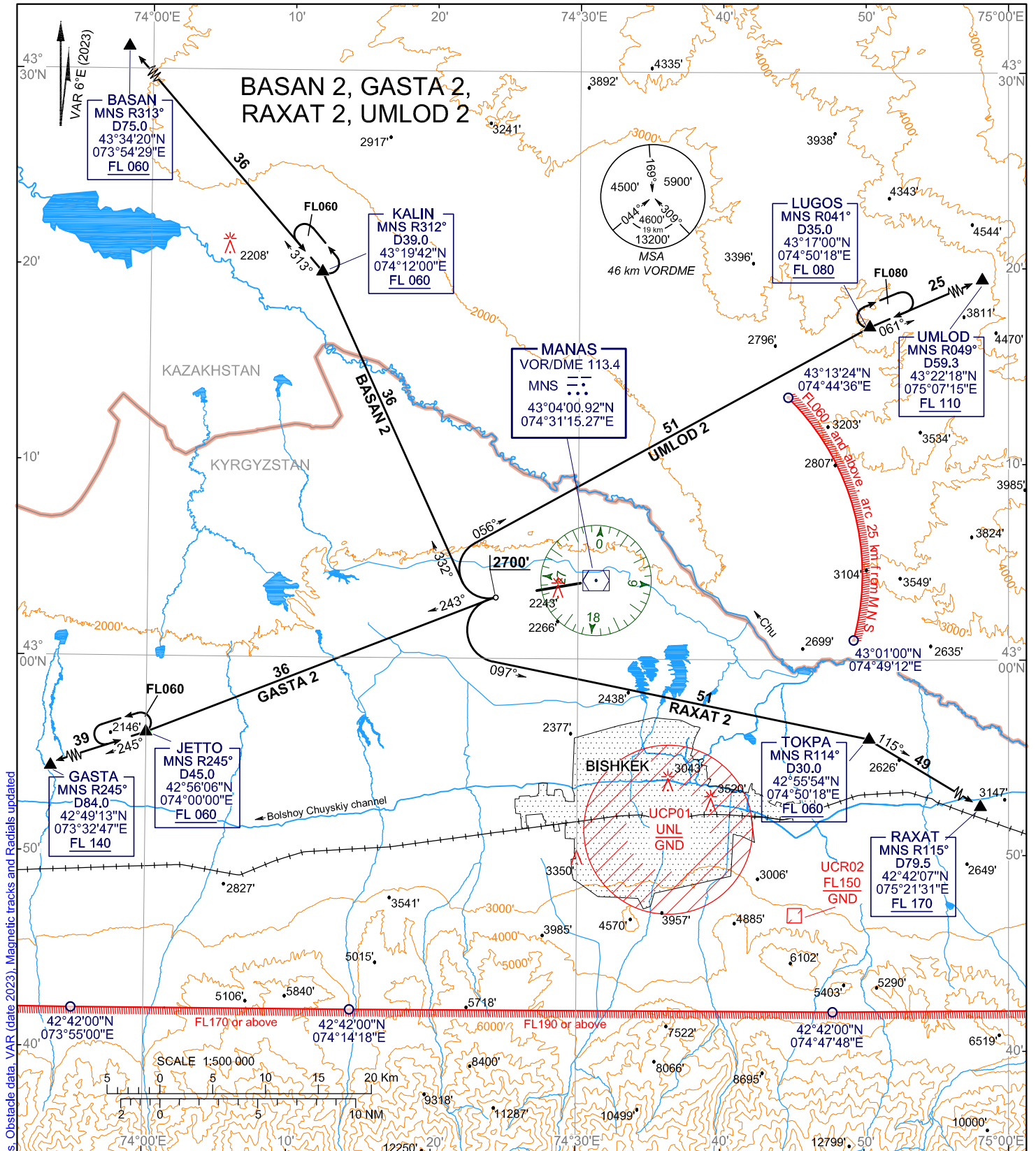


STANDARD DEPARTURE CHART
INSTRUMENT (SID) - ICAO

TRANSITION
ALTITUDE : 4400'

BISHKEK, KYRGYZSTAN
MANAS
RWY25



CHANGE: RWY Headings and Designators. Obstacle data. VAR (date 2023). Magnetic tracks and Radials updated

START		118.1
APPROACH	FL195 or below	124.6
CONTROL	above FL195	132.2

- WARNING;**
1. After take-off CAT A ACFT and HEL shall start the initial turn at 2400'.
 2. When climb gradient are less than those indicated in the table, after take-off ACFT shall turn right (GASTA 2) to join the assigned corridor.

RADIALS AND TRACKS ARE MAGNETIC
ALTITUDES, HEIGHTS AND ELEVATIONS ARE IN FEET
DISTANCES ARE IN KILOMETRES

Ground speed km/h	200	250	300	350	400	450	500	550	
Rate of climb m/s	5.2%	2.9	3.6	4.3	5.0	5.8	6.4	7.2	7.9