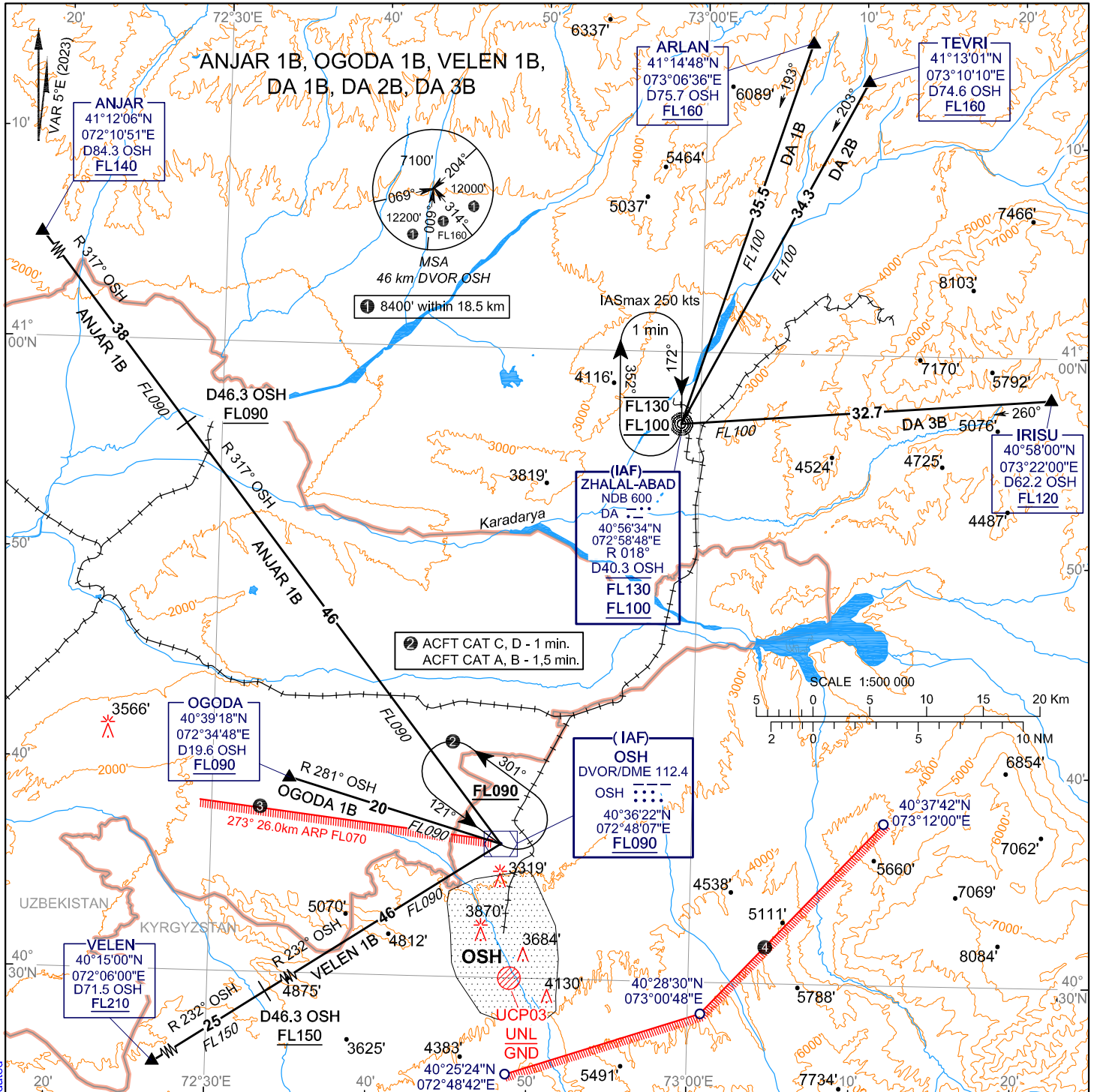


STANDARD ARRIVAL CHART
INSTRUMENT (STAR) - ICAO

TRANSITION
LEVEL : FL070

OSH, KYRGYZSTAN
OSH
RWY 12



APPROACH 124.2
TOWER 118.3
ATIS 134.2

WARNING:
③ Line to the S of which flights below FL070 are PROHIBITED.
④ Line to the SE of which flights below FL130 are PROHIBITED.

BEARINGS AND TRACKS ARE MAGNETIC
ALTITUDES, HEIGHTS AND ELEVATIONS ARE IN FEET
DISTANCES ARE IN KILOMETRES

STANDARD ARRIVAL CHART INSTRUMENT (STAR) ROUTES Osh RWY12

ANJAR 1B	After passing ANJAR proceed on R317° OSH to DVOR/DME OSH (IAF). Cross DVOR/DME OSH (IAF) at FL090 or above.
OGODA 1B	After passing OGODA proceed on R281° OSH to DVOR/DME OSH (IAF). Cross DVOR/DME OSH (IAF) at FL090 or above.
VELEN 1B	After passing VELEN proceed on R232° OSH to DVOR/DME OSH (IAF). Cross DVOR/DME OSH (IAF) at FL090 or above.
DA 1B	After passing ARLAN proceed on 193° track to DA (IAF). Cross DA (IAF) at FL100 or above.
DA 2B	After passing TEVRI proceed on 203° track to DA (IAF). Cross DA (IAF) at FL100 or above.
DA 3B	After passing IRISU proceed on 260° track to DA (IAF). Cross DA (IAF) at FL100 or above.

CHANGE: Obstacles data - VAR (date 2023). Magnetic tracks updated