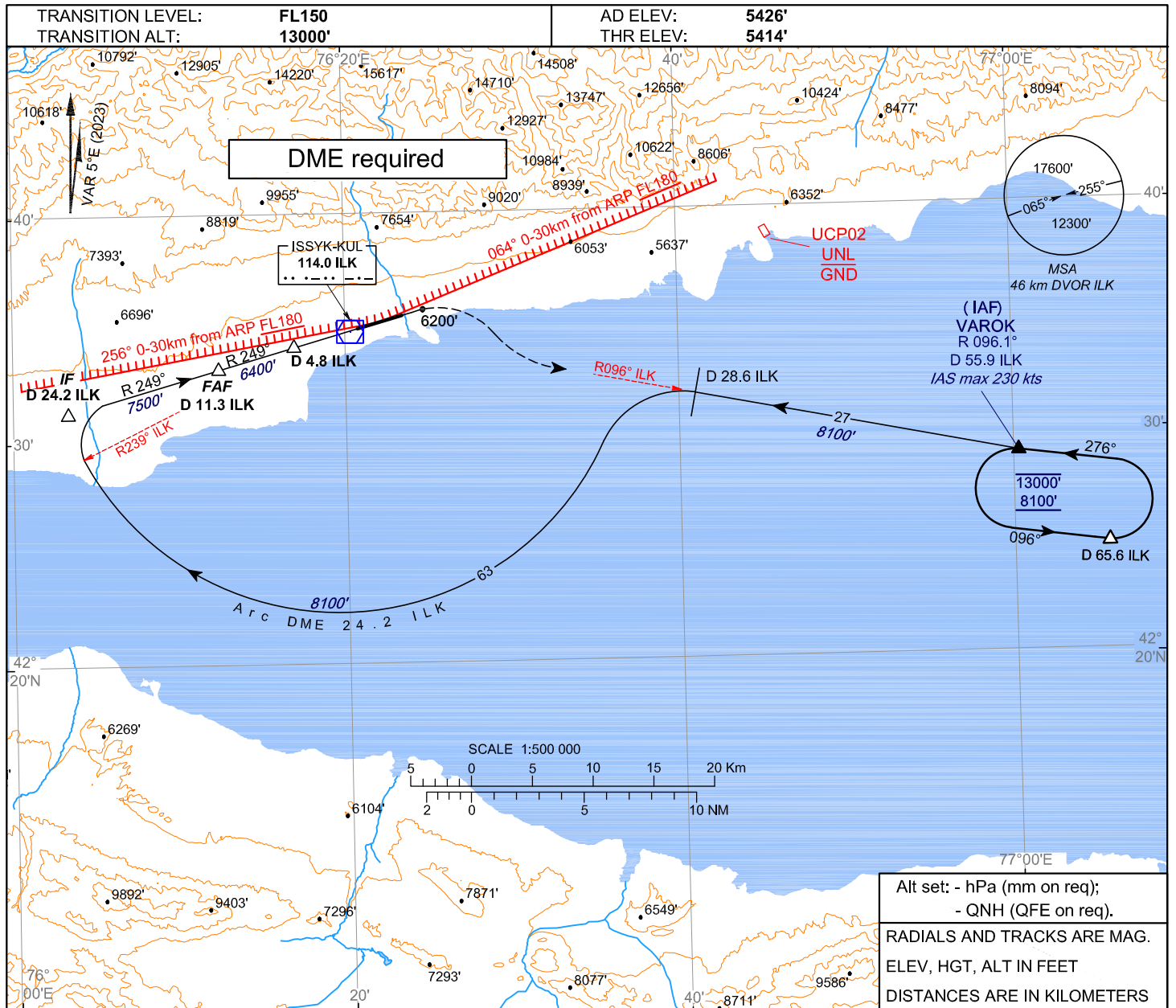


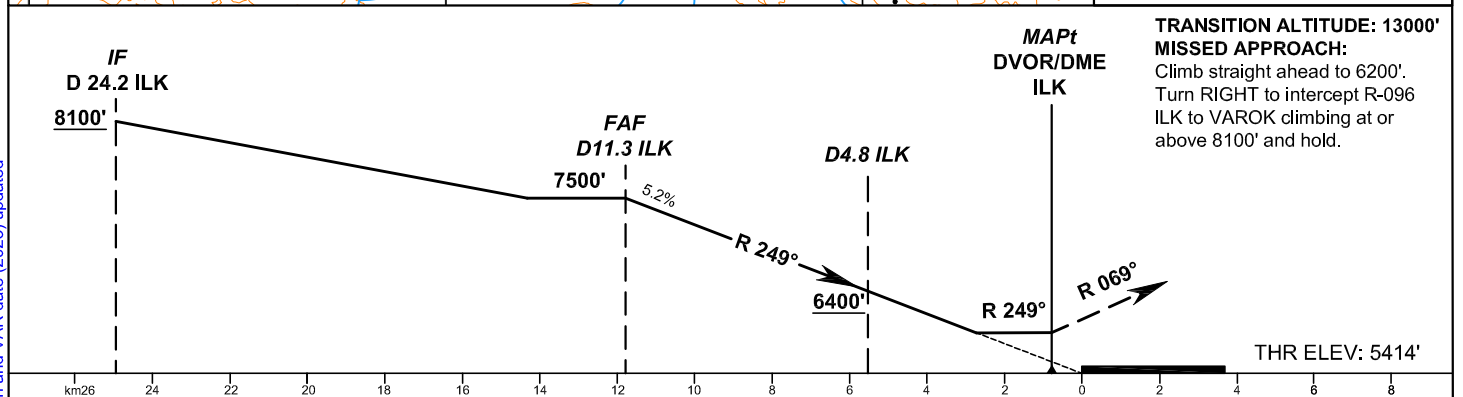
**INSTRUMENT
APPROACH
CHART - ICAO**

TOWER 118.7

**KYRGYZSTAN
ISSYK-KUL
VOR/DME RWY 07**



Alt set: - hPa (mm on req);
- QNH (QFE on req).
RADIALS AND TRACKS ARE MAG.
ELEV, HGT, ALT IN FEET
DISTANCES ARE IN KILOMETERS



TRANSITION ALTITUDE: 13000'
MISSED APPROACH:
Climb straight ahead to 6200'.
Turn RIGHT to intercept R-096
ILK to VAROK climbing at or
above 8100' and hold.

ACFT CAT	OCA/H
	DVOR/DME
A	6140' (730')
B	
C	
D	

GROUND SPEED	KT	70	90	100	120	140	160	180
RATE OF DESCENT	ft/min	372	478	531	637	743	849	955
MAPt: DVOR ILK								

DME ILK, km	10.0	8.0	6.0	4.0
ALTITUDE	7290' (1880')	6940' (1530')	6600' (1190')	6260' (850')

CHANGE: Obstacle data, FL Restriction and VAR date (2023) updated