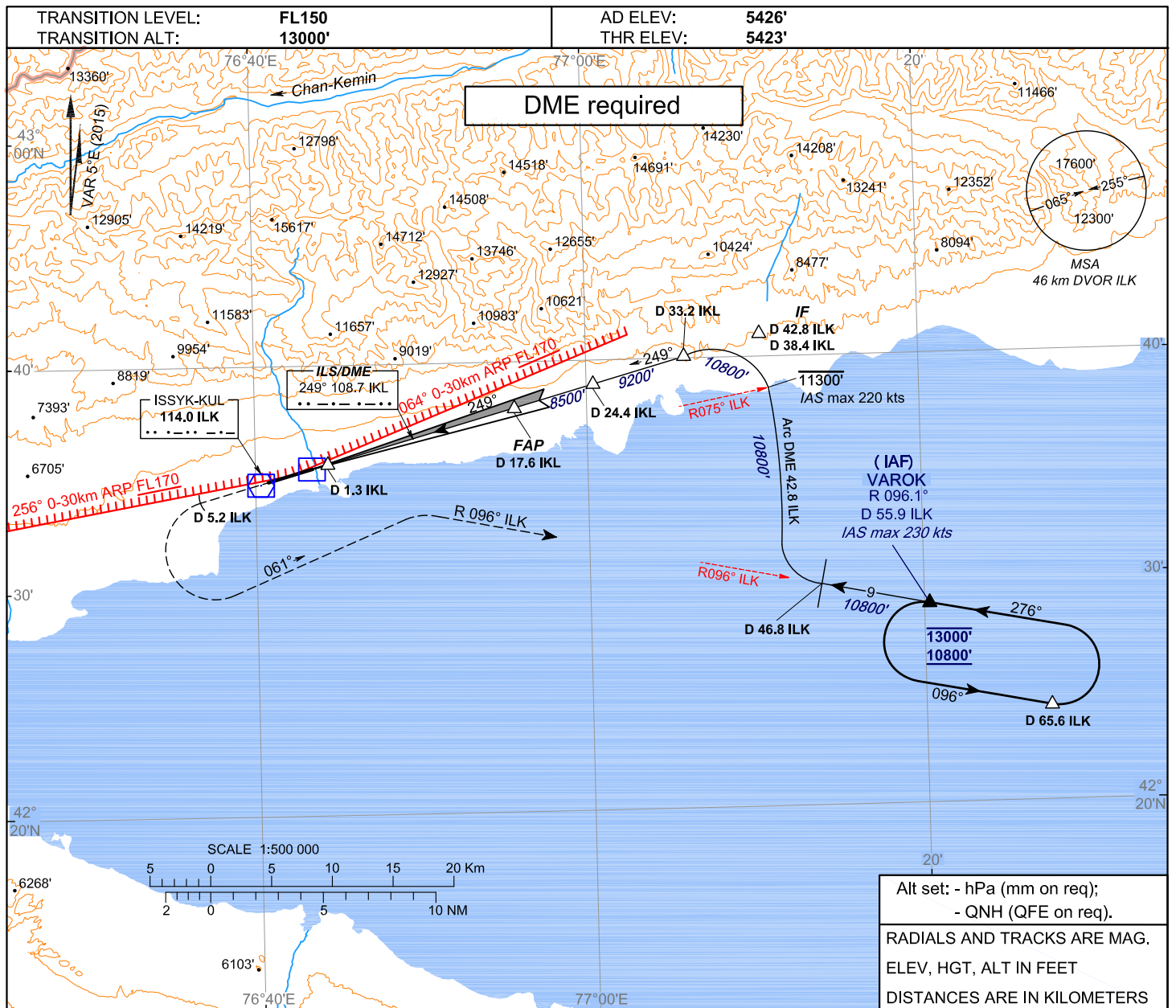


**INSTRUMENT
APPROACH
CHART - ICAO**

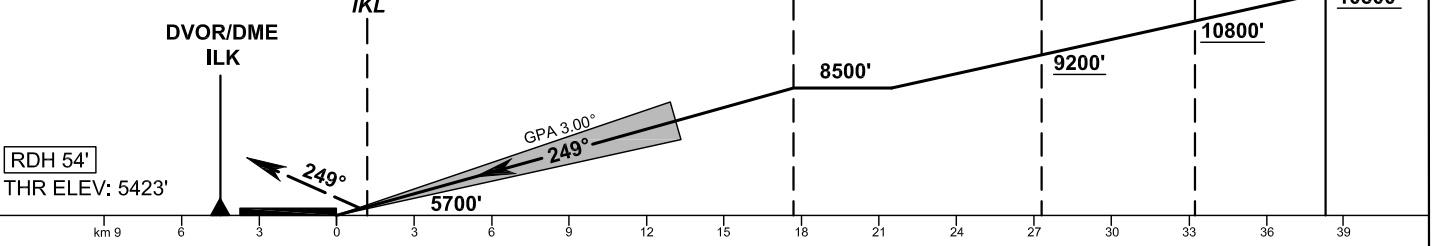
ILS/DME
249° 108.7 IKL
•• - - - ••••
CH 24X

ISSYK-KUL TOWER 118.7

**KYRGYZSTAN
ISSYK-KUL
ILS DME-Y RWY 25**



TRANSITION ALTITUDE: 13000'
MISSED APPROACH:
Climb straight ahead to D 5.2 IKL.
Turn LEFT to 061° to intercept
R-096 ILM to VAROK climbing at
or above 10800' and hold.



ACFT CAT	OCA/H	
	ILSDME	
A	5626'/(203')	
B	5635'/(212')	
C	5643'/(220')	
D	5656'/(232')	

CHANGE: headers and footers, limiting bearing line