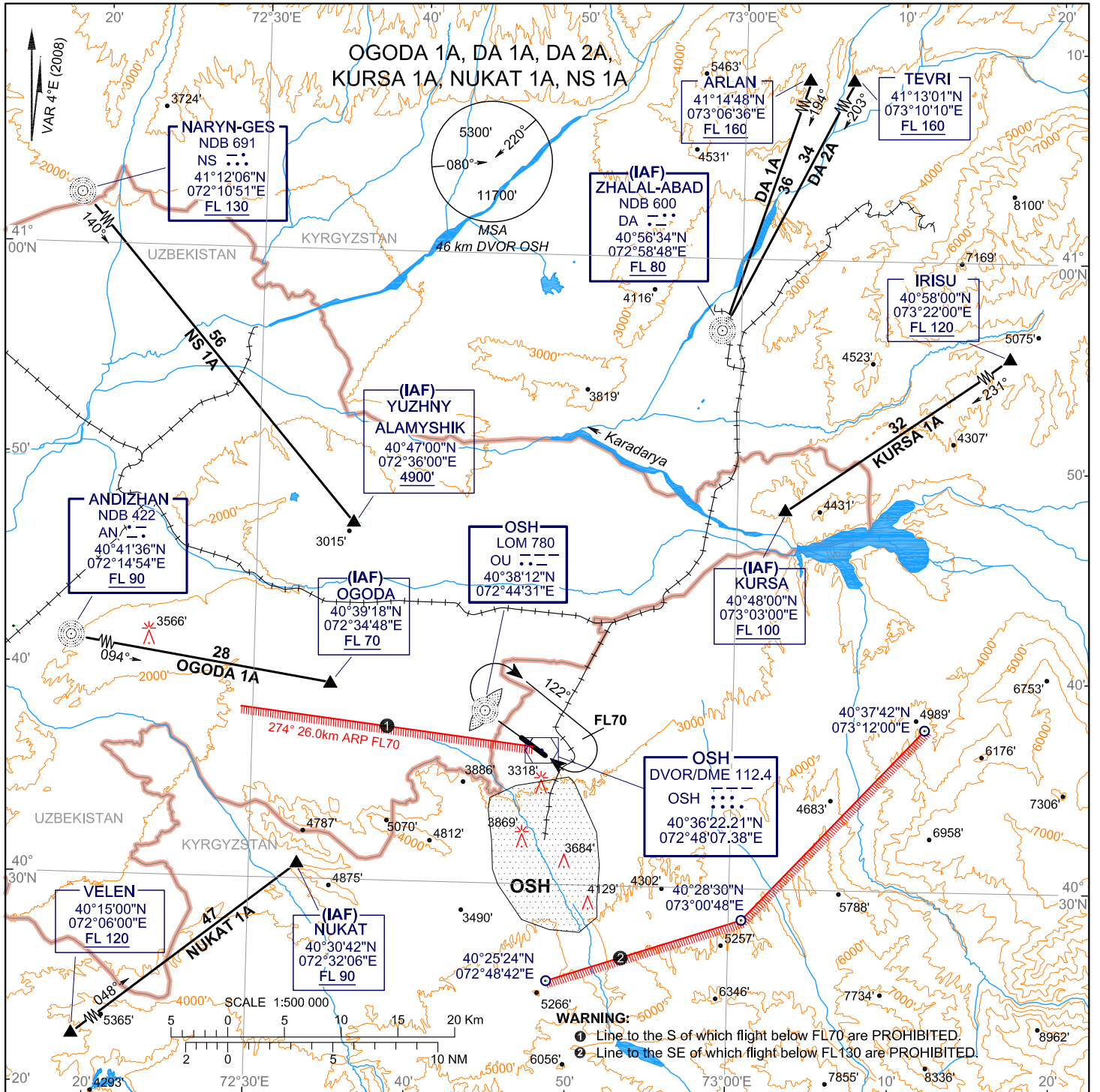


STANDARD ARRIVAL CHART  
INSTRUMENT (STAR) - ICAO

TRANSITION  
LEVEL : FL70

OSH, KYRGYZSTAN  
OSH  
RWY 12



APPROACH 124.2  
TOWER 118.3  
ATIS 134.2

BEARINGS AND TRACKS ARE MAGNETIC  
ALTITUDES, HEIGHTS AND ELEVATIONS ARE IN FEET  
DISTANCES ARE IN KILOMETRES

STANDARD ARRIVAL CHART INSTRUMENT (STAR) ROUTES Osh RWY12

OGODA 1A	After passing AN proceed on 094° track to OGODA (IAF). Cross OGODA (IAF) at FL70 or above.
NS 1A	After passing NS proceed on 140° track to Yuzhny Alamyshyk (IAF). Cross Yuzhny Alamyshyk (IAF) at 4900' or above.
DA 1A	After passing ARLAN proceed on 194° track to DA (IAF). Cross DA (IAF) at FL80 or above.
DA 2A	After passing TEVRI proceed on 203° track to DA (IAF). Cross DA (IAF) at FL80 or above.
KURSA 1A	After passing IRISU proceed on 231° track to KURSA (IAF). Cross KURSA (IAF) at FL100 or above.
NUKAT 1A	After passing VELEN proceed on 048° track to NUKAT (IAF). Cross NUKAT (IAF) at FL90 or above.

CHANGE: VELEN