

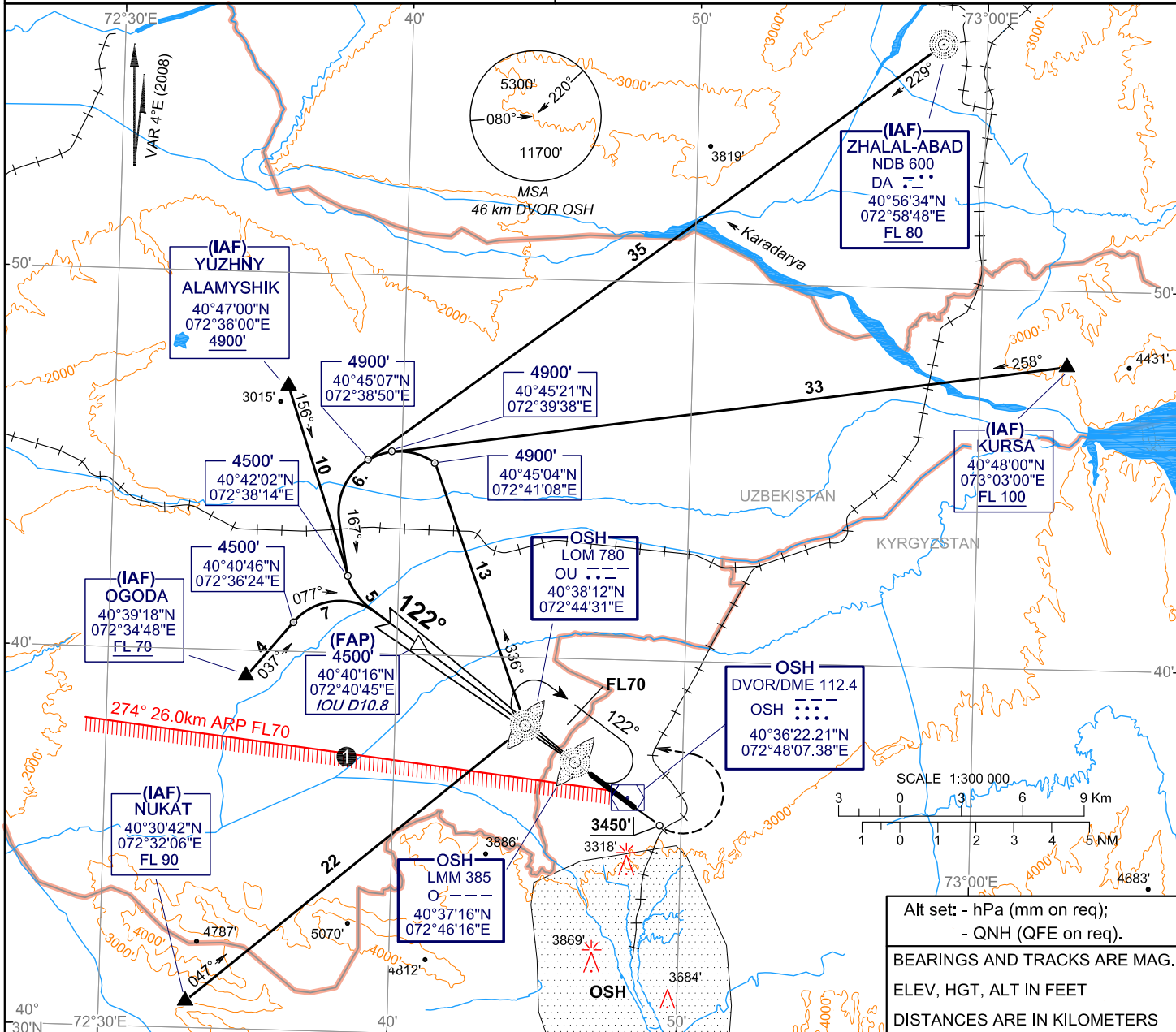
**INSTRUMENT
APPROACH
CHART - ICAO**

ILS/DME
122° 111.1 IOU
CH 48X

APPROACH 124.2
TOWER 118.3
ATIS 134.2

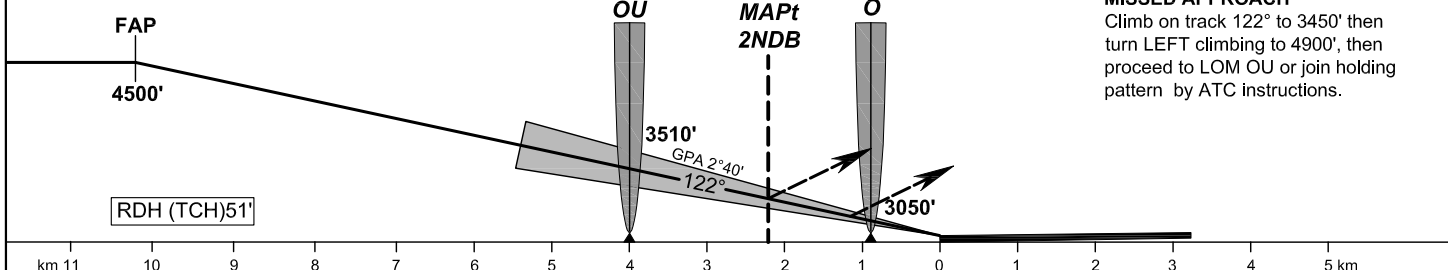
OSH, KYRGYZSTAN
OSH
ILS DME, 2 NDB RWY 12

TRANSITION LEVEL: **FL70** AD ELEV: **2938'**
TRANSITION ALT: **4900'** THR ELEV: **2852'**



Alt set: - hPa (mm on req);
- QNH (QFE on req).
BEARINGS AND TRACKS ARE MAG.
ELEV, HGT, ALT IN FEET
DISTANCES ARE IN KILOMETERS

ALT	4270'	4120'	3970'	3810'	3660'	3510'	3360'	3200'	3050'
DME IOU	9.3	8.3	7.3	6.3	5.3	4.3	3.3	2.3	1.3



MISSED APPROACH
Climb on track 122° to 3450' then turn LEFT climbing to 4900', then proceed to LOM OU or join holding pattern by ATC instructions.

OCA/H	A				B				C				D			
	CAT I				2 NDB				CAT I				2 NDB			
Straight-in Approach	3002' (151')				3012' (161')				3022' (171')				3035' (184')			
	3240' (390')				3240' (390')				3240' (390')				3240' (390')			
GROUND SPEED	km/h				150	180	210	240	270	300	330	360	390	420	450	
RATE OF DESCENT (Grad 5.17%)	m/s				2.2	2.6	3.0	3.4	3.9	4.3	4.7	5.2	5.6	6.0	6.5	

WARNING
Line to the S of which flights below FL70 are PROHIBITED.

CHANGE: AD ELEVATION