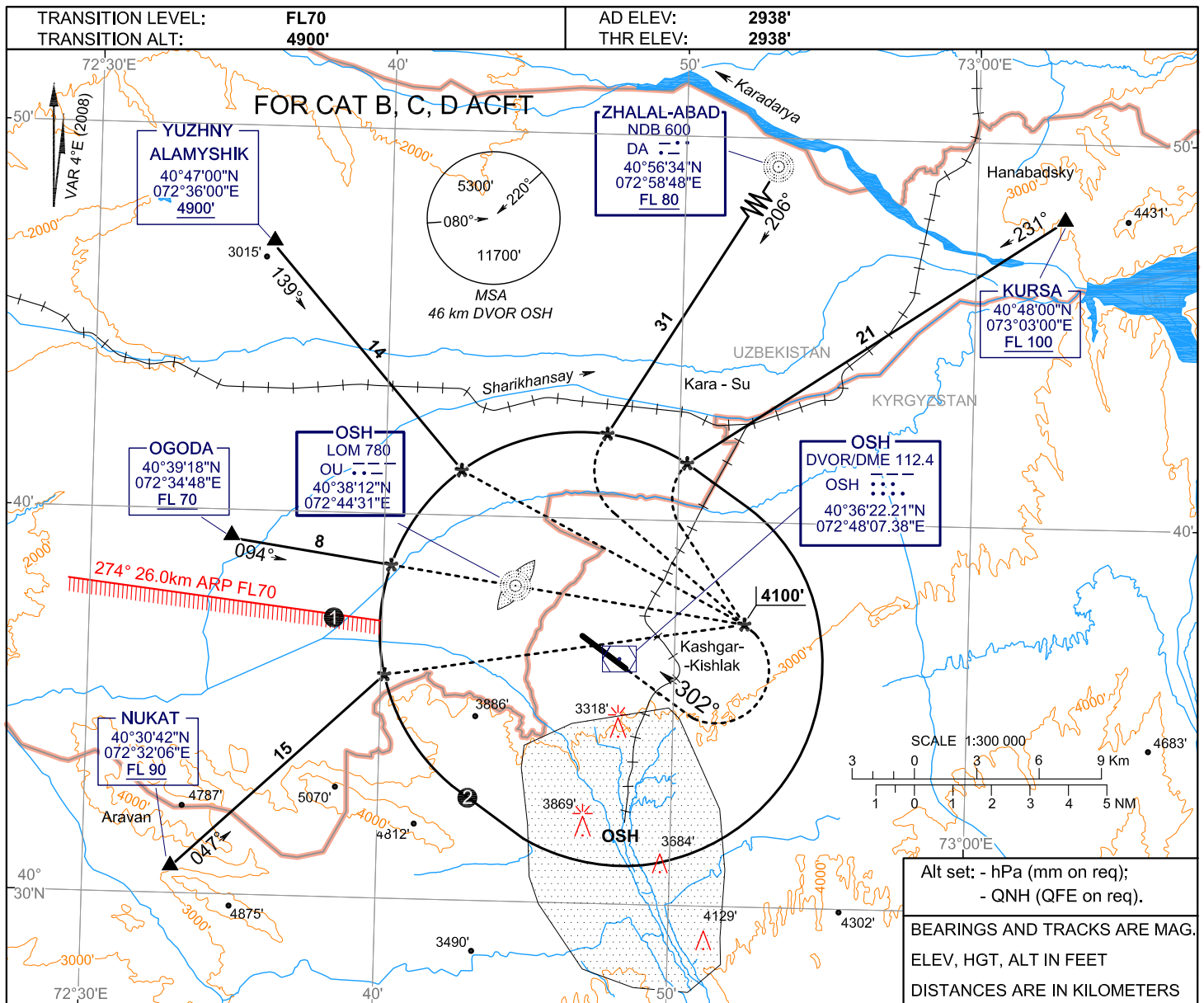


CIRCLING
APPROACH
CHART - ICAO

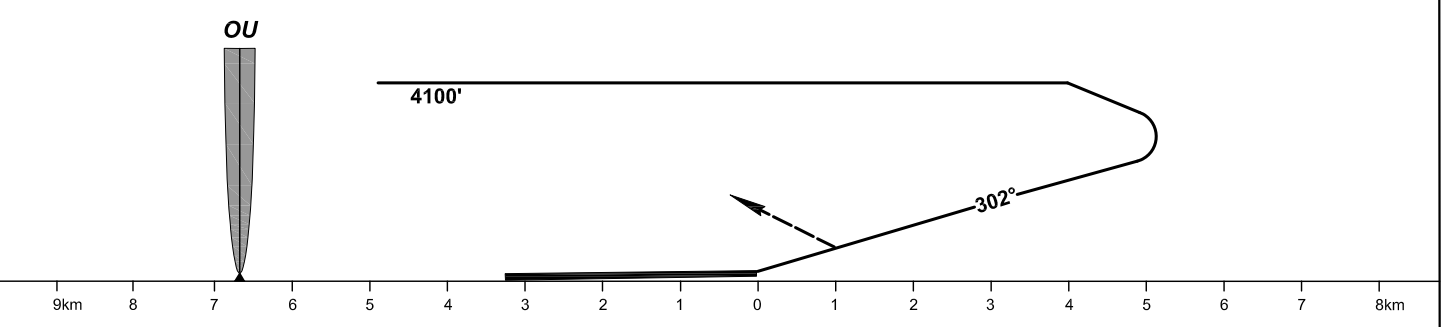
OSH, KYRGYZSTAN
OSH
CIRCLING RWY 30

APPROACH	124.2
TOWER	118.3
ATIS	134.2



Alt set: - hPa (mm on req);
- QNH (QFE on req).
BEARINGS AND TRACKS ARE MAG.
ELEV, HGT, ALT IN FEET
DISTANCES ARE IN KILOMETERS

MISSED APPROACH
Climb on track 302° to 3600' then turn RIGHT to LOM OU climbing to 4900', as directed by ATC.



WARNING:
① Line to the S of which flights below FL070 are PROHIBITED. The radius of visual manoeuvring (circling) area and MAX IAS
② for ACFT categories are as follows:
B - 4900 (250 KMH); C - 7850 (335 KMH); D - 9790 (380 KMH)

CHANGE: ELEVATION AD AND THR

ACFT CAT	A	B	C	D	D-widebody
Visual Manoeuvring (Circling) Area	MDA, ft	4100'	4100'	4100'	