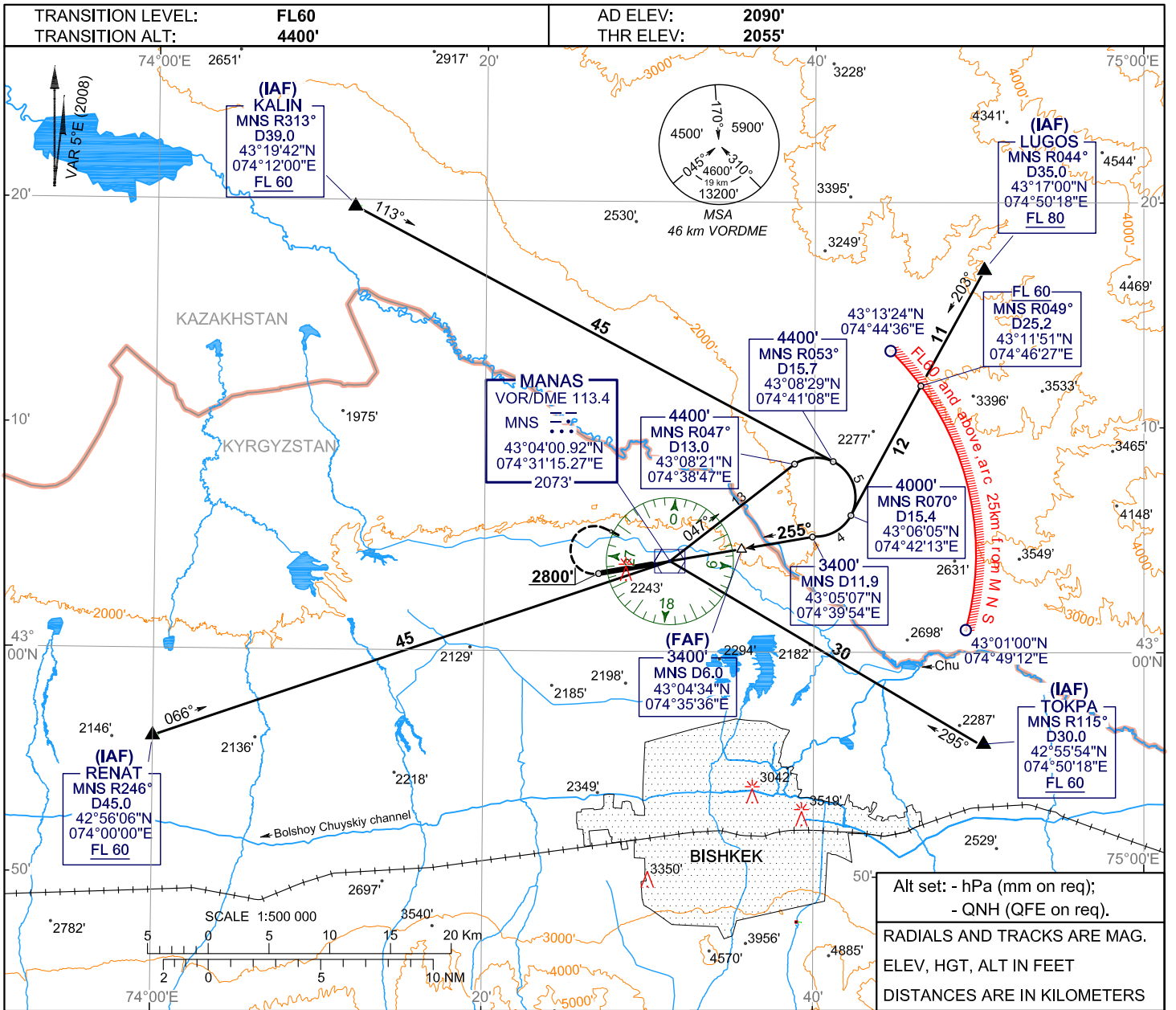


**INSTRUMENT
APPROACH
CHART - ICAO**

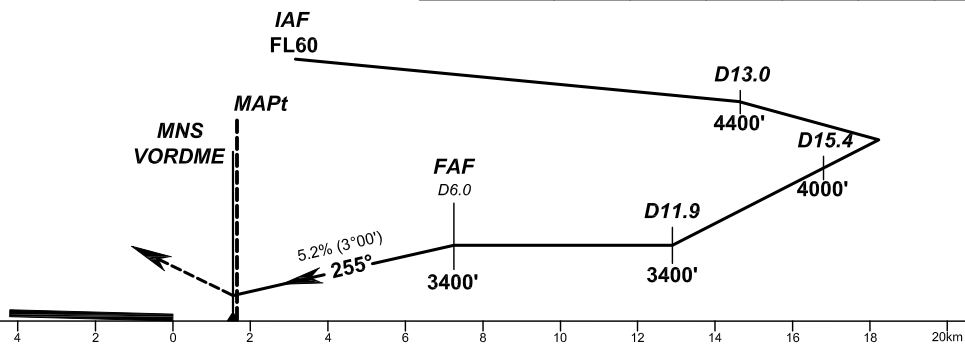
APPROACH TOWER **124.6**
118.1

**BISHKEK, KYRGYZSTAN
MANAS
VORDME RWY 26**



ALT	3230'	3060'	2890'	2720'	2550'	2370'
DME MNS	5.0	4.0	3.0	2.0	1.0	0.0

MISSED APPROACH
Climb on track 255° to 2800', then turn RIGHT climbing to 4400' to VORDME, then according to chart or as directed by ATC instruction.



	OCA/H	A	B	C	D	WARNING An increased turbulence and wind shear may be experienced on final.						
Straight-in Approach	VORDME	2418' (345')	2418' (345')	2418' (345')	2418' (345')							
GROUND SPEED	km/h	150	180	210	240	270	300	330	360	390	420	450
RATE OF DESCENT (Grad 5.2%)	m/s	2.0	2.4	2.8	3.2	3.6	4.0	4.4	4.8	5.3	5.6	6.1

CHANGE: WGS-84, new chart