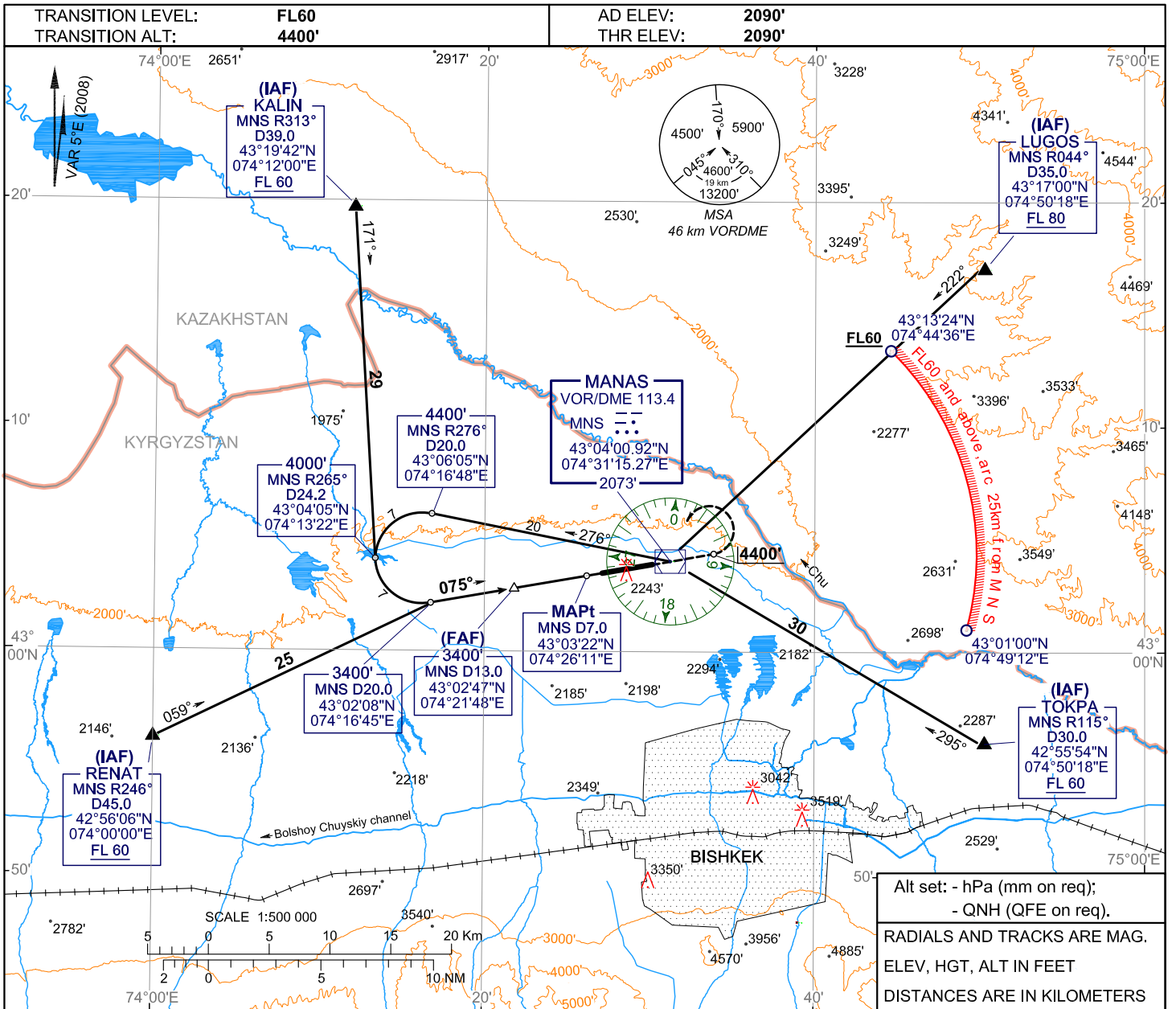


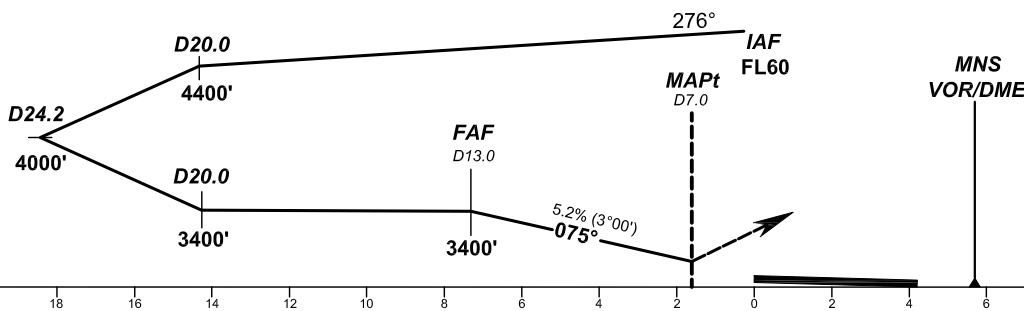
**INSTRUMENT
APPROACH
CHART - ICAO**

APPROACH TOWER **124.6**
TOWER **118.1**

**BISHKEK, KYRGYZSTAN
MANAS
VORDME RWY 08**



ALT	3230'	3060'	2890'	2710'	2540'	2370'
DME MNS	12.0	11.0	10.0	9.0	8.0	7.0



MISSED APPROACH
Climb on track 075° to 4400', then turn LEFT to VORDME, then according to chart or as directed by ATC instruction.

Straight-in Approach	OCA/H											
	VORDME	A	B	C	D							
	2418' (328')	2418' (328')	2418' (328')	2418' (328')								
GROUND SPEED	km/h	150	180	210	240	270	300	330	360	390	420	450
RATE OF DESCENT (Grad 5.2%)	m/s	2.0	2.4	2.8	3.2	3.6	4.0	4.4	4.8	5.2	5.5	5.9

WARNING
An increased turbulence and wind shear may be experienced on final.

CHANGE: WGS-84, new chart