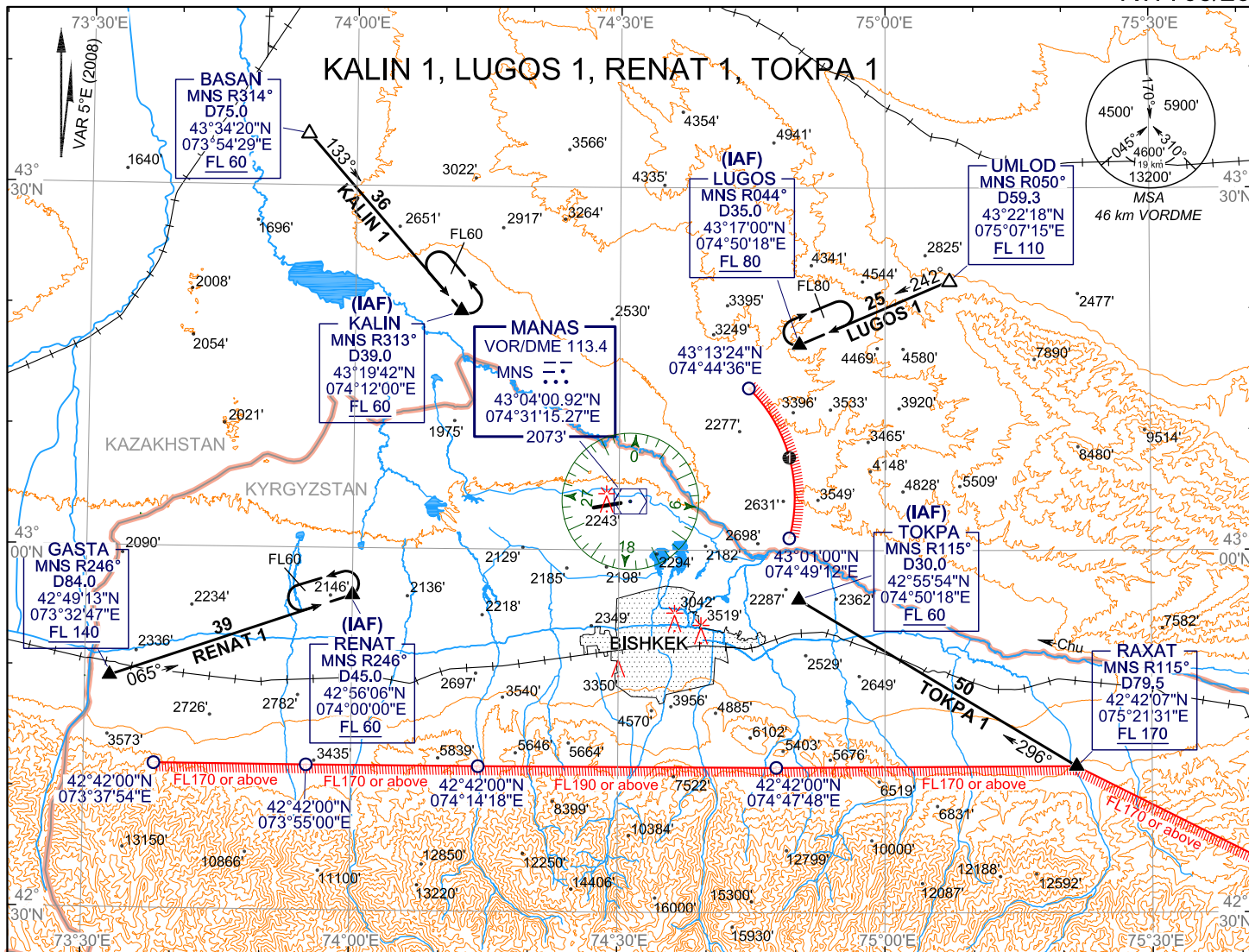


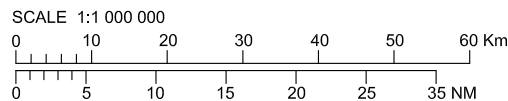
STANDARD ARRIVAL CHART  
INSTRUMENT (STAR)- ICAO

TRANSITION  
LEVEL : FL60

BISHKEK, KYRGYZSTAN  
MANAS  
RWY08/26



START 118.1  
APPROACH 124.6  
ATIS 127.9



RADIALS AND TRACKS ARE MAGNETIC  
ALTITUDES, HEIGHTS AND ELEVATIONS ARE IN FEET  
DISTANCES ARE IN KILOMETRES

**WARNING:**  
Flights from east line R25km VORDME limited  
43°13'24"N 074°44'36"E - 43°01'00"N 074°49'12"E  
at altitudes below FL60 - PROHIBITED.

STANDARD ARRIVAL CHART INSTRUMENT (STAR) ROUTES

Bishkek Manas RWY 08/26

|         |   |
|---------|---|
| KALIN 1 | After passing BASAN proceed on 133° track to KALIN (IAF). Cross KALIN (IAF) at FL60 or above. |
| LUGOS 1 | After passing UMLOD proceed on 242° track to LUGOS (IAF). Cross LUGOS (IAF) at FL80 or above. |
| TOKPA 1 | After passing RAXAT proceed on 296° track to TOKPA (IAF). Cross TOKPA (IAF) at FL60 or above. |
| RENAT 1 | After passing GASTA proceed on 065° track to RENAT (IAF). Cross RENAT (IAF) at FL60 or above. |

CHANGE: ATIS