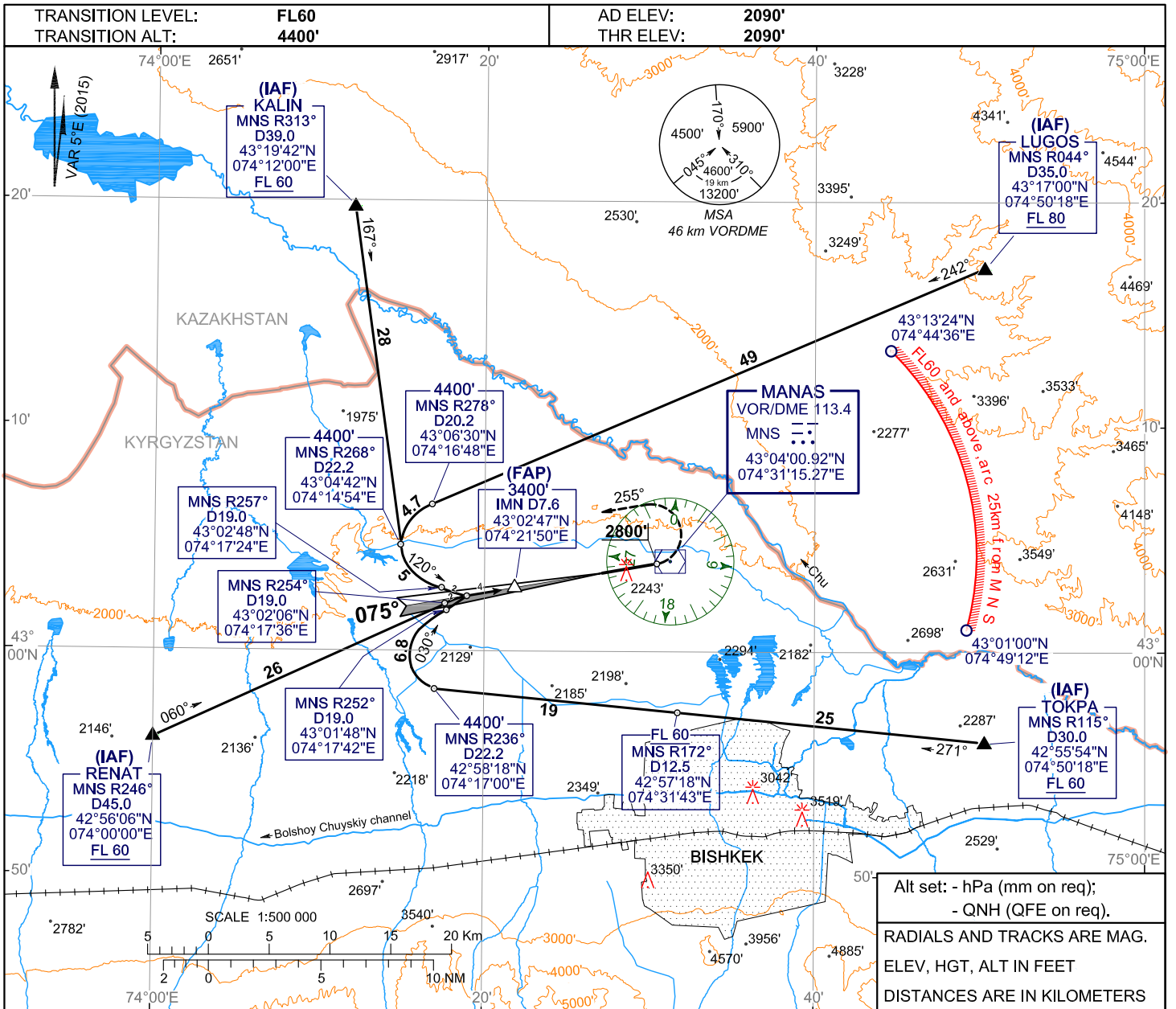


**INSTRUMENT  
APPROACH  
CHART - ICAO**

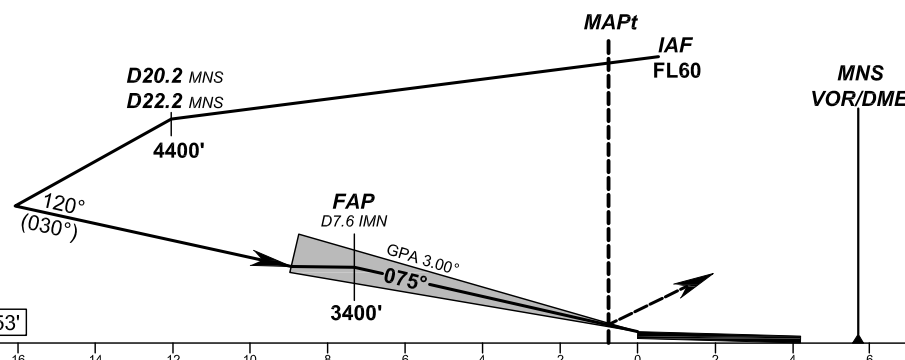
**ILS/DME**  
075° 111.7 IMN  
•••••  
CH 54X

**APPROACH** 124.6  
**TOWER** 118.1  
**ATIS** 127.9

**BISHKEK, KYRGYZSTAN**  
**MANAS**  
**ILS DME RWY 08**



Alt set: - hPa (mm on req);  
- QNH (QFE on req).  
RADIALS AND TRACKS ARE MAG.  
ELEV, HGT, ALT IN FEET  
DISTANCES ARE IN KILOMETERS



**MISSED APPROACH**  
Climb on track 075° to 2800', then turn LEFT on track 255° climbing to 4400', then by ATC instruction.

RDH (TCH) 53'

OCA/H	A	B	C	D	WARNING An increased turbulence and wind shear may be experienced on final.										
Straight-in Approach	CAT II	2139' (49')	2152' (62')	2165' (75')	2178' (88')										
	CAT I	2230' (141')	2240' (150')	2250' (160')	2260' (170')										
GROUND SPEED	km/h	150	180	210	240	270	300	330	360	390	420	450			
RATE OF DESCENT (Grad 5.2%)	m/s	2.2	2.6	3.1	3.5	4.0	4.4	4.8	5.3	5.7	6.0	6.6			

CHANGE: removed NDB M, NDB MN