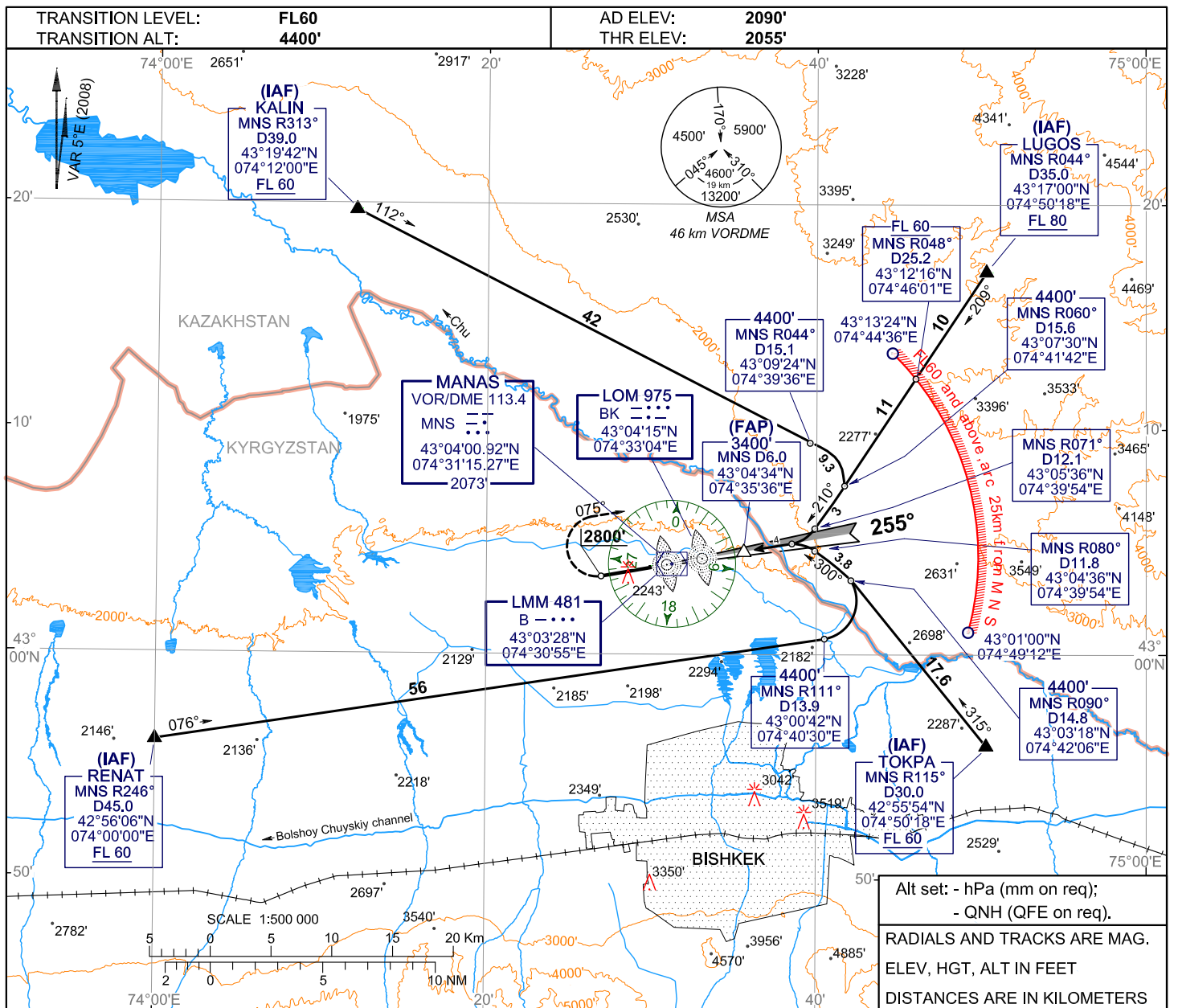


**INSTRUMENT  
APPROACH  
CHART - ICAO**

**ILS/DME**  
255° 111.7 IBK  
••••• - - -

**APPROACH 124.6**  
**TOWER 118.1**  
**ATIS 127.9**

**BISHKEK, KYRGYZSTAN**  
**MANAS**  
**ILS , 2 NDB RWY 26**

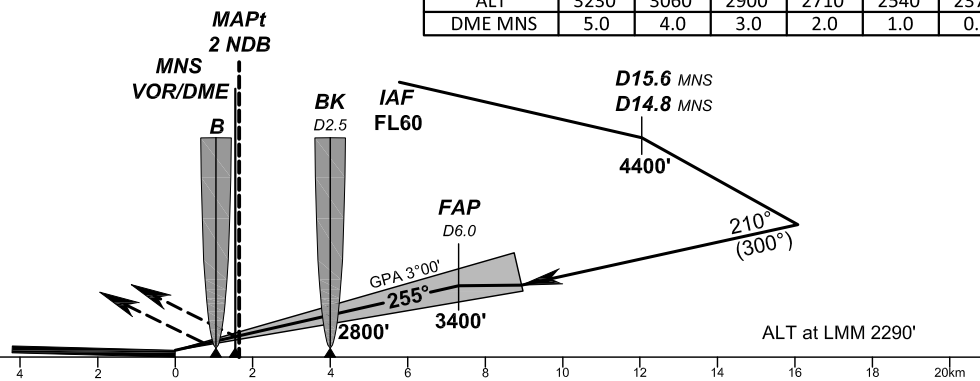


Alt set: - hPa (mm on req);  
- QNH (QFE on req).  
RADIALS AND TRACKS ARE MAG.  
ELEV, HGT, ALT IN FEET  
DISTANCES ARE IN KILOMETERS

ALT	3230'	3060'	2900'	2710'	2540'	2370'
DME MNS	5.0	4.0	3.0	2.0	1.0	0.0

**MISSED APPROACH**  
Climb on track 255° to 2800', then turn RIGHT on track 075° climbing to 4400', then by ATC instruction.

RDH (TCH) 60'



OCA/H	A	B	C	D	
Straight-in Approach	CAT II	2102' (49')	2116' (62')	2129' (75')	2142' (88')
	CAT I	2194' (141')	2204' (150')	2214' (160')	2221' (170')
	2 NDB	2391' (338')	2391' (338')	2391' (338')	2391' (338')

**WARNING**  
An increased turbulence and wind shear may be experienced on final.

GROUND SPEED	km/h	150	180	210	240	270	300	330	360	390	420	450
RATE OF DESCENT (Grad 5.2%)	m/s	1.9	2.3	2.7	3.1	3.5	3.9	4.2	4.6	5.0	5.4	5.8

CHANGE: remove point and altitude. ATIS