

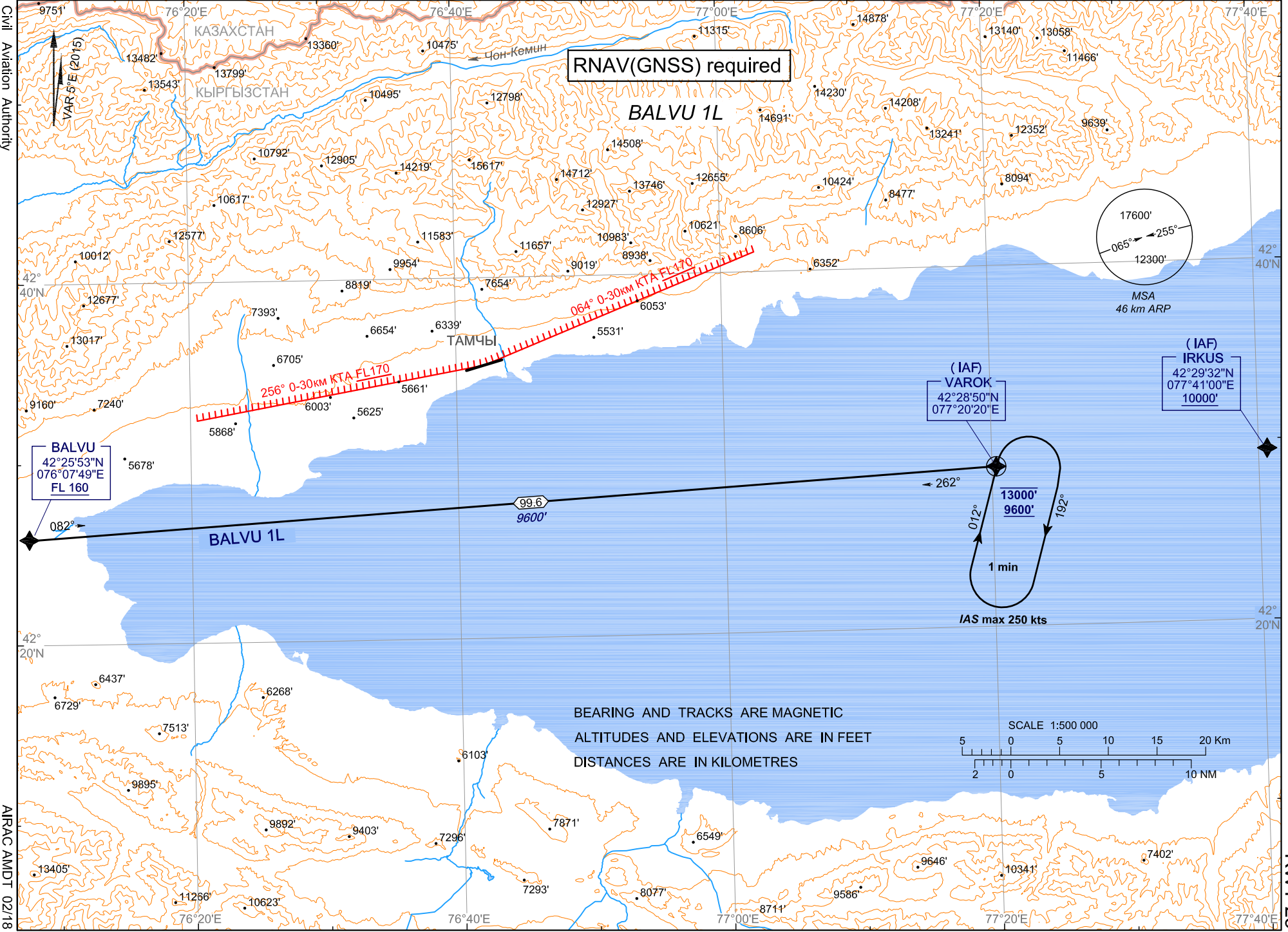
STAR RNAV- ICAO

TRANSITION  
LEVEL : FL150

TOWER  
118.7

KYRGYZSTAN  
ISSYK-KUL  
RWY 25

CHANGE: headers and footers, limiting bearing line



Civil Aviation Authority

AIRAC AMDT 02/18

RNAV(GNSS) required

BALVU 1L

BALVU  
42°25'53"N  
076°07'49"E  
FL 160

(IAF)  
VAROK  
42°28'50"N  
077°20'20"E

(IAF)  
IRKUS  
42°29'32"N  
077°41'00"E  
10000'

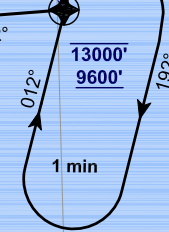
17600'  
065° ← 255°  
12300'

MSA  
46 km ARP

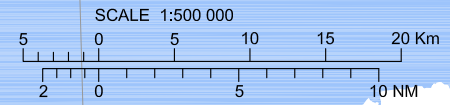
256° 0-30km KTA FL170

064° 0-30km KTA FL170

13000'  
9600'



BEARING AND TRACKS ARE MAGNETIC  
ALTITUDES AND ELEVATIONS ARE IN FEET  
DISTANCES ARE IN KILOMETRES



STANDARD ARRIVAL  
ROUTE - INSTRUMENT (STAR RNAV)

KYRGYZSTAN  
ISSYK-KUL  
RWY 25

STAR RNAV RWY 25 BALVU 1L

Serial # / Procedure designator	Navigational performance	Path descriptor	Waypoint identifier	Waypoint coordinates	Fly- Over	True track [°] / Magnetic track [°]	Distance [km]	Turn direction	Upper limit [ft] / Lower limit [ft]	Speed limit [kts]
BALVU 1L	RNAV 1	IF	BALVU	42°25'53.0"N 076°07'49.0"E	-	-	-	-	- / 16000	-
BALVU 1L	RNAV 1	TF	VAROK	42°28'50.0"N 077°20'20.0"E	Y	086.4 / 082	99.6	-	13000 / 9600	250.0
BALVU 1L	RNAV 1	HM	VAROK	42°28'50.0"N 077°20'20.0"E	-	017.2 / 012	-	R	13000 / 9600	250.0