

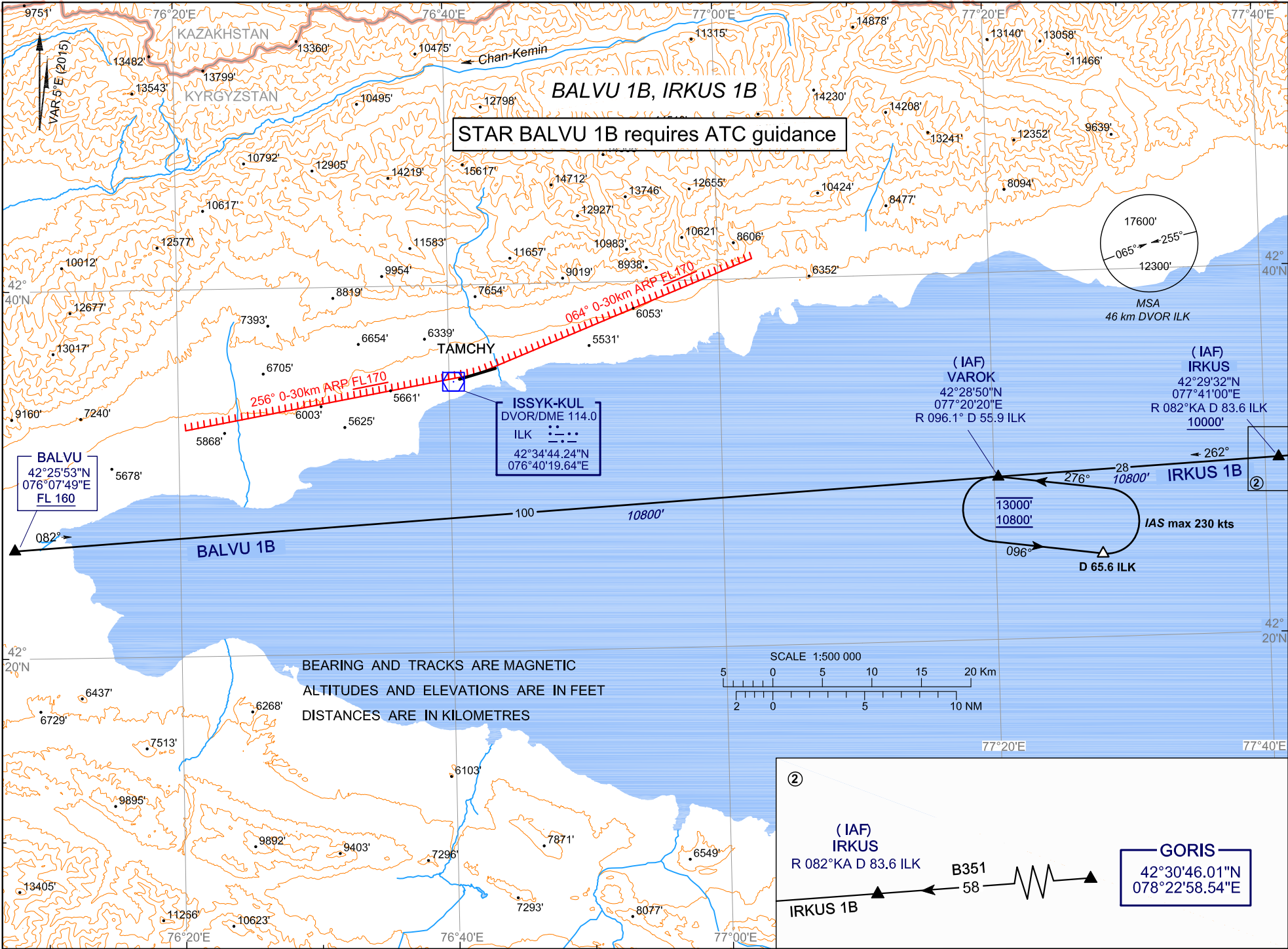
TRANSITION  
LEVEL : FL150

TOWER  
118.7

CHANGE: headers and footers, limiting bearing line

Civil Aviation Authority

AIRAC AMDT 02/18



STAR BALVU 1B requires ATC guidance

BALVU  
42°25'53"N  
076°07'49"E  
FL 160

ISSYK-KUL  
DVOR/DME 114.0  
ILK  
42°34'44.24"N  
076°40'19.64"E

(IAF)  
VAROK  
42°28'50"N  
077°20'20"E  
R 096.1° D 55.9 ILK

(IAF)  
IRKUS  
42°29'32"N  
077°41'00"E  
R 082°KA D 83.6 ILK  
10000'

13000'  
10800'

D 65.6 ILK

GORIS  
42°30'46.01"N  
078°22'58.54"E

(IAF)  
IRKUS  
R 082°KA D 83.6 ILK

IRKUS 1B

B351  
58

BEARING AND TRACKS ARE MAGNETIC  
ALTITUDES AND ELEVATIONS ARE IN FEET  
DISTANCES ARE IN KILOMETRES

