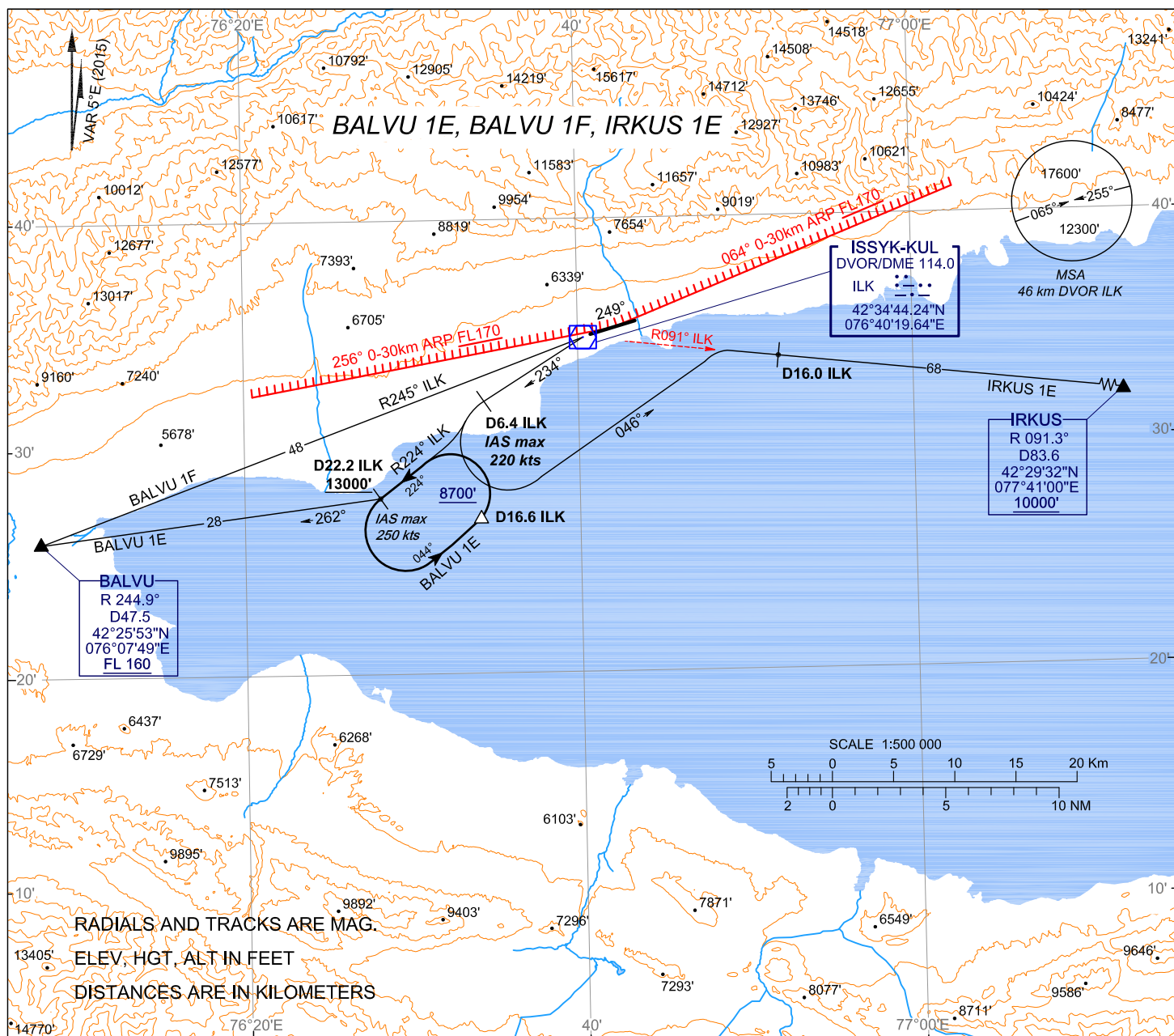


STANDARD DEPARTURE CHART
INSTRUMENT (SID) - ICAO

TRANSITION
ALTITUDE: **13000'**

TOWER **118.7**

KYRGYZSTAN
ISSYK-KUL
RWY 25



| GROUND SPEED | KT | 75 | 100 | 150 | 200 | 250 |
|---------------------|--------|-----|-----|------|------|------|
| Climb Gradient 4.5% | | | | | | |
| RATE OF CLIMB | ft/min | 342 | 456 | 684 | 911 | 1139 |
| Climb Gradient 6.8% | | | | | | |
| RATE OF CLIMB | ft/min | 516 | 689 | 1033 | 1377 | 1722 |

BALVU 1E require ATC guidance on track from D22.2 ILK to BALVU

This SIDs require minimum climb gradients of:

- IRKUS 1E - 4.5% up to 6300';
- BALVU 1E - 4.5% up to 8700';
- BALVU 1F - 6.8% up to FL160

STANDARD DEPARTURE ROUTES - INSTRUMENT (SID) ISSYK-KUL RWY 25

| | |
|-----------------|--|
| IRKUS 1E | After take-off on track 234° MAG on D6.4 ILK turn LEFT (IASmax 220kts) on track 046° MAG with access to R091°ILK and proceed to IRKUS. Cross IRKUS not below 10000'. |
| BALVU 1E | After take-off on track 234° MAG on D6.4 ILK turn LEFT (IASmax 220kts) with access to R224°ILK reach D22.2 ILK climbing not below 8700'. Further climbing not below 13000' by scheme with two twin left turn at 180° and line limiting the outbound leg D16.6 ILK. After climbing not below 13000' on D22.2 ILK turn RIGHT on track 262° MAG and proceed to BALVU. Cross BALVU not below FL160. |
| BALVU 1F | Climbing with R245°ILK to BALVU. Cross BALVU not below FL160. |

CHANGE: headers and footers, add SID description, limiting bearing line