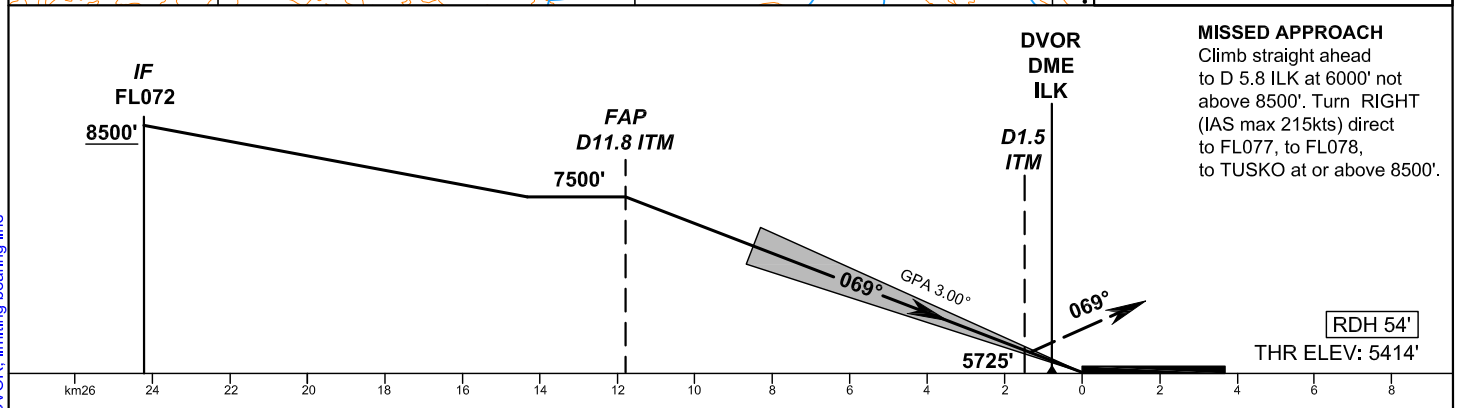
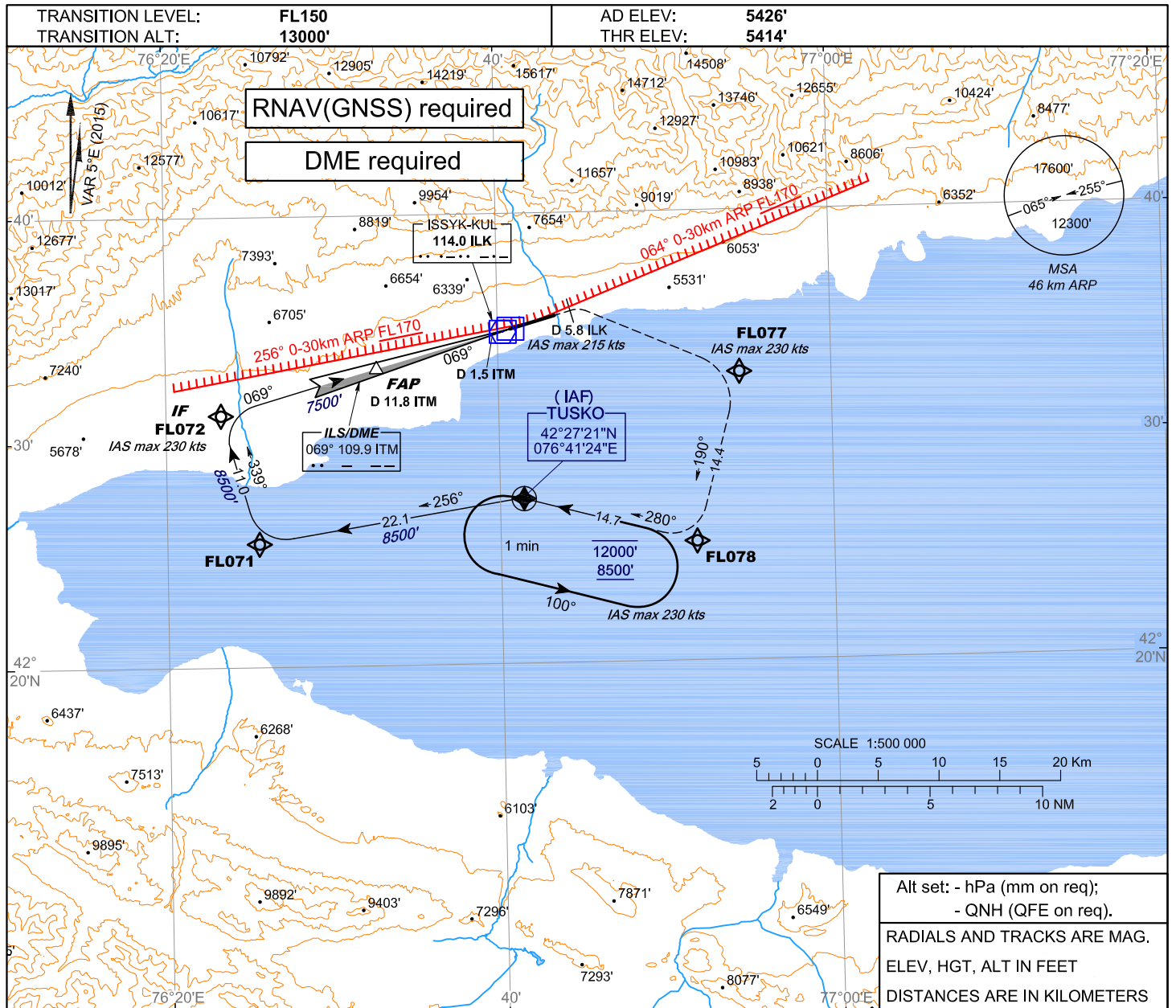


**INSTRUMENT
APPROACH
CHART - ICAO**

ILS/DME
069° 109.9 ITM
CH 36X

TOWER 118.7

**KYRGYZSTAN
ISSYK-KUL
ILS DME-Z RWY 07**



MISSED APPROACH
Climb straight ahead to D 5.8 ILK at 6000' not above 8500'. Turn RIGHT (IAS max 215kts) direct to FL077, to FL078, to TUSKO at or above 8500'.

CHANGE: headers and footers, add DVOR, limiting bearing line

ACFT CAT	OCA/H	
	ILSDME	
	MACG 2.5%	MACG 4%
A	5683' (269')	5601' (187')
B	5693' (279')	5610' (196')
C	5706' (292')	5619' (205')
D	5716' (302')	5631' (217')

INSTRUMENT APPROACH
Route Data

KYRGYZSTAN
ISSYK-KUL
RWY 07

ILS DME Z RWY 07 from TUSKO

Serial # / Procedure designator	Navigational performance	Path descriptor	Waypoint identifier	Waypoint coordinates	Fly- Over	True track [°] / Magnetic track [°]	Distance [km]	Turn direction	Upper limit [ft] Lower limit [ft]	Speed limit [kts]	VPA [°]	TCH [ft]
ILSDME _ RWY 07 from TUSKO	RNAV 1	IF	TUSKO	42°27'21.0"N 076°41'24.0"E	-	-	-	-	12000 / 8500	230.0	-	-
ILSDME _ RWY 07 from TUSKO	RNAV 1	TF	FL071	42°25'28.6"N 076°25'31.0"E	N	261.0 / 256	22.1	-	- / 8500	230.0	-	-
ILSDME _ RWY 07 from TUSKO	RNAV 1	TF	FL072	42°31'11.4"N 076°23'18.5"E	N	344.0 / 339	11.0	-	- / 8500	230.0	-	-
ILSDME _ RWY 07 from TUSKO	RNAV 1	TF	FAP 07	42°33'07.3"N 076°32'27.8"E	N	074.0 / 069	13.0	-	- / 7500	-	3.00	54
ILSDME _ RWY 07 from TUSKO	RNAV 1	CF	RWY07	42°34'51.8"N 076°40'46.4"E	N	074.1 / 069	-	-	- / 5468	-	3.00	54
ILSDME _ RWY 07 from TUSKO	RNAV 1	CF	D 5.8 ILK	42°35'37.3"N 076°44'24.4"E	Y	074.2 / 069	-	-	8500 / 6000	-	-	-
ILSDME _ RWY 07 from TUSKO	RNAV 1	DF	FL077	42°32'47.3"N 076°54'29.9"E	N	-	-	R	-	230.0	-	-
ILSDME _ RWY 07 from TUSKO	RNAV 1	TF	FL078	42°25'17.7"N 076°51'46.3"E	N	195.1 / 190	14.4	-	- / 8500	230.0	-	-
ILSDME _ RWY 07 from TUSKO	RNAV 1	TF	TUSKO	42°27'21.0"N 076°41'24.0"E	N	285.0 / 280	14.7	-	12000 / 8500	230.0	-	-
ILSDME _ RWY 07 from TUSKO	RNAV 1	HM	TUSKO	42°27'21.0"N 076°41'24.0"E	-	285.0 / 280	-	L	12000 / 8500	230.0	-	-