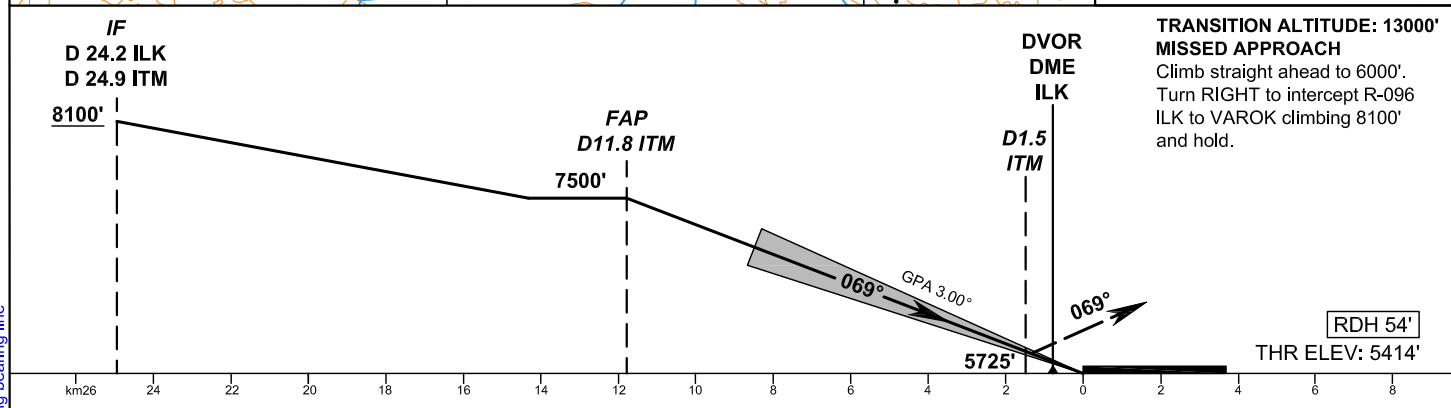
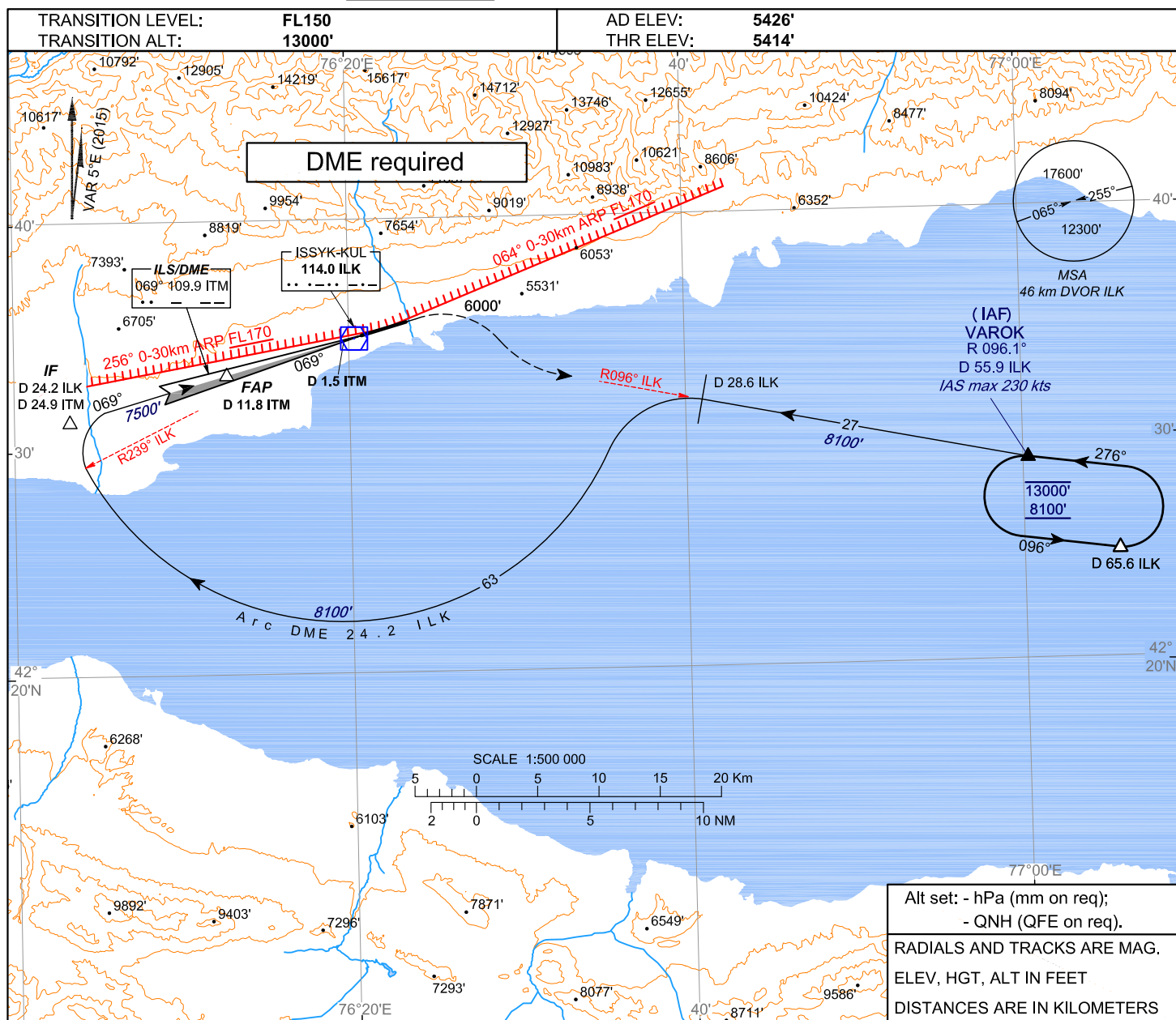


**INSTRUMENT
APPROACH
CHART - ICAO**

ILS/DME
069° 109.9 ITM
CH 36X

TOWER 118.7

**KYRGYZSTAN
ISSYK-KUL
ILS DME-Y RWY 07**



ACFT CAT	OCA/H	
	ILSDME	
	MACG 2.5%	MACG 4%
A	5683' (269')	5601' (187')
B	5693' (279')	5610' (196')
C	5706' (292')	5619' (205')
D	5716' (302')	5631' (217')

CHANGE: headers and footers, limiting bearing line