

ATC SURVEILLANCE MINIMUM
ALTITUDE CHART - ICAO

TRANSITION LEVEL: FL150
TRANSITION ALT: 13000'

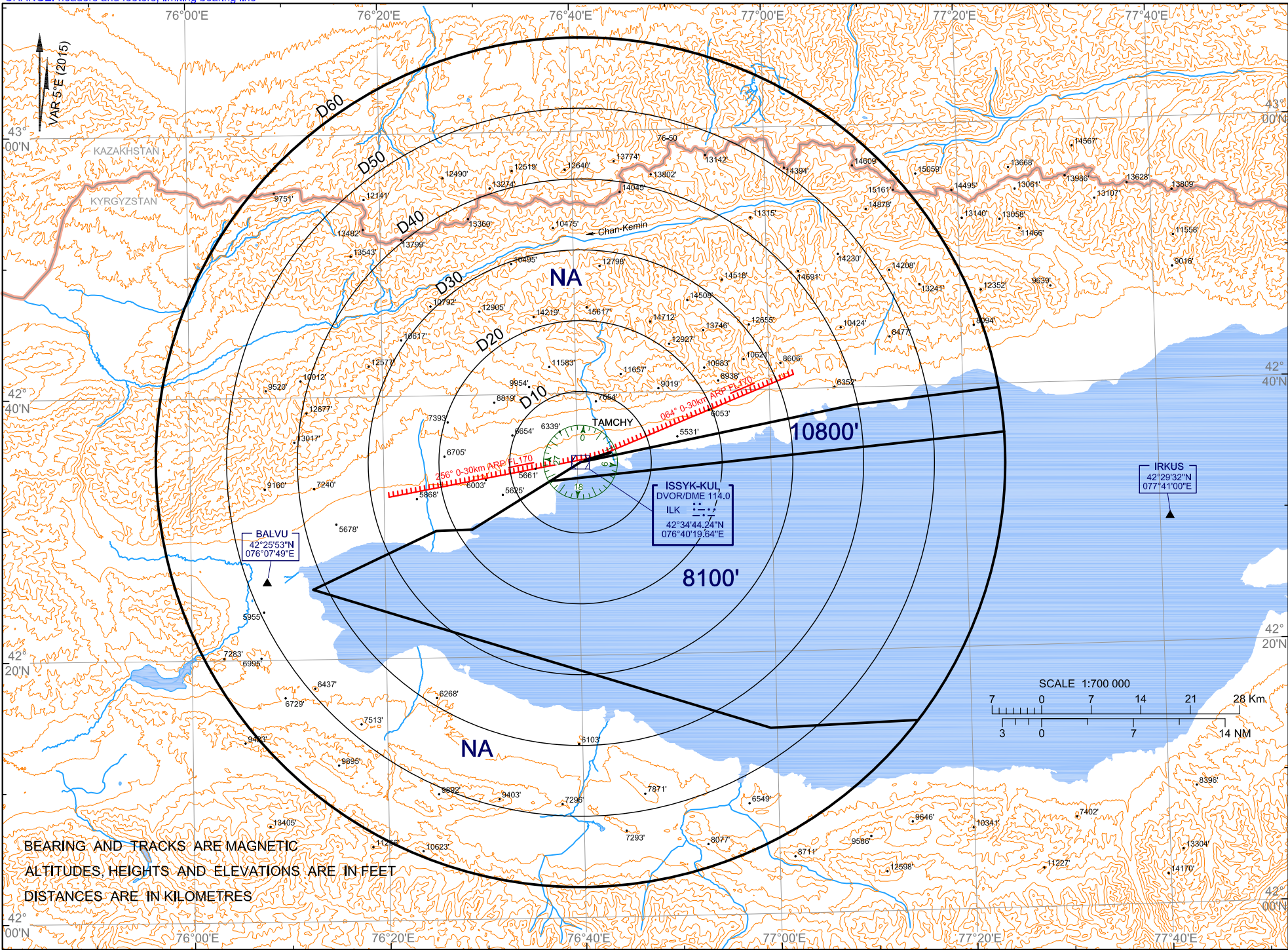
TOWER 118.7

KYRGYZSTAN
ISSYK-KUL

CHANGE: headers and footers, limiting bearing line

Civil Aviation Authority

AIRAC AMDT 02/18



LIST OF COORDINATES FOR
ATC SMA CHART

KYRGYZSTAN
ISSYK-KUL

Altitude/FL	No	Latitude	Longitude
8100'	1	42°36'18.6364"N	077°24'08.6596"E
	2	42°33'20.4617"N	076°37'09.4411"E
	3	42°29'45.1458"N	076°29'02.1715"E
	4	42°29'41.2104"N	076°25'19.4101"E
	5	42°25'20.7293"N	076°12'32.1650"E
	6	42°14'09.9749"N	076°59'20.0358"E
	7	42°14'29.0534"N	077°14'29.0593"E
10800'	1	42°36'18.6364"N	077°24'08.6596"E
	2	42°33'20.4617"N	076°37'09.4411"E
	3	42°34'44.2374"N	076°40'19.6423"E
	4	42°38'39.4959"N	077°08'45.2819"E
	5	42°39'41.6321"N	077°23'41.9461"E