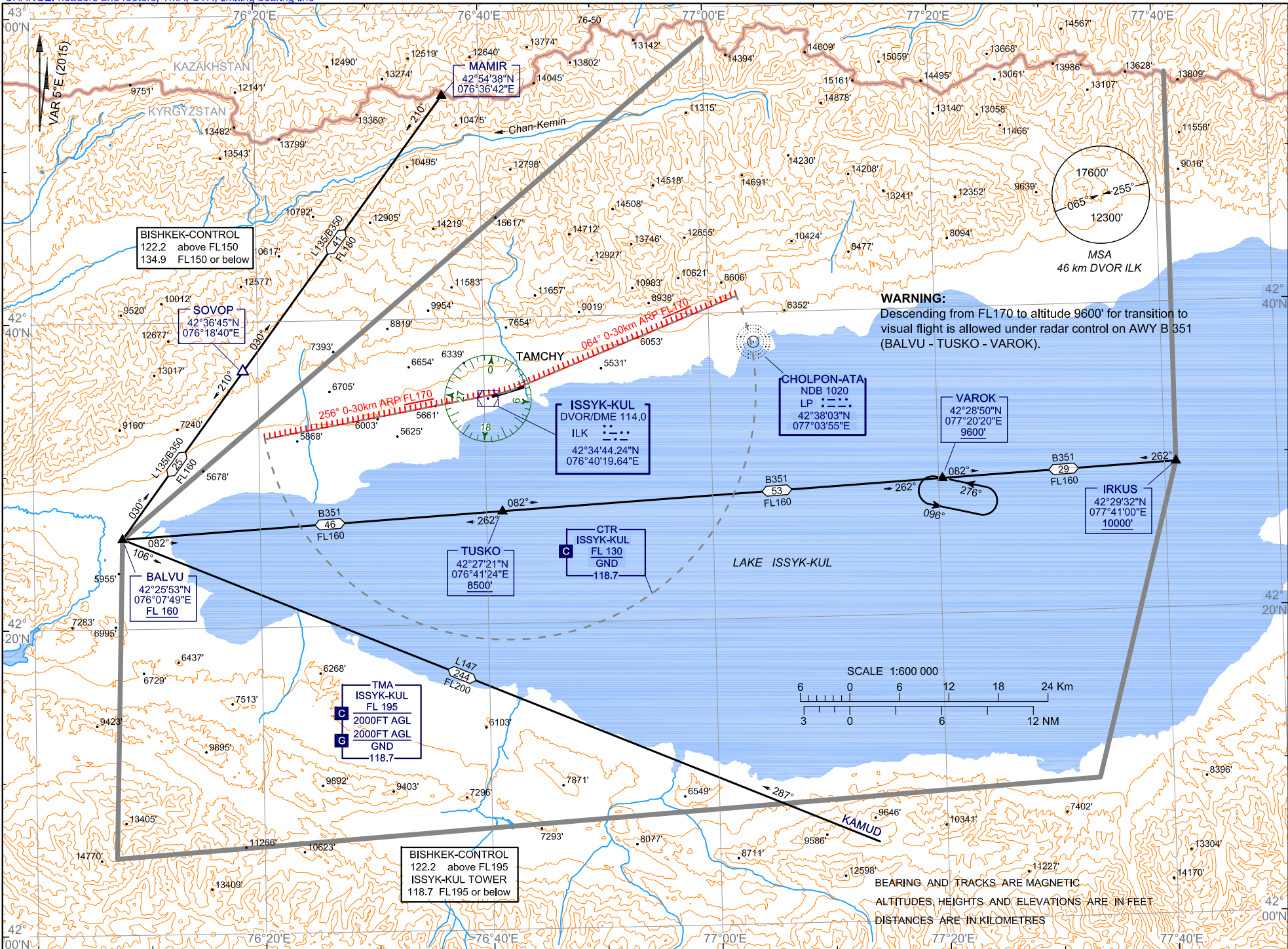


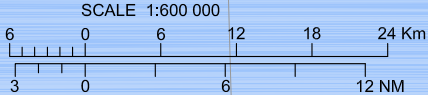
CHANGE: headers and footers, TMA, CTR, limiting bearing line

Civil Aviation Authority

AIRAC AMDT 02/18



WARNING:
 Descending from FL170 to altitude 9600' for transition to visual flight is allowed under radar control on AWY B 351 (BALVU - TUSKO - VAROK).



BEARING AND TRACKS ARE MAGNETIC
 ALTITUDES, HEIGHTS AND ELEVATIONS ARE IN FEET
 DISTANCES ARE IN KILOMETRES